

---

## Befimmo continues to grow Acquisition of the office building of the "Esprit Courbevoie" project in Louvain-la-Neuve

---

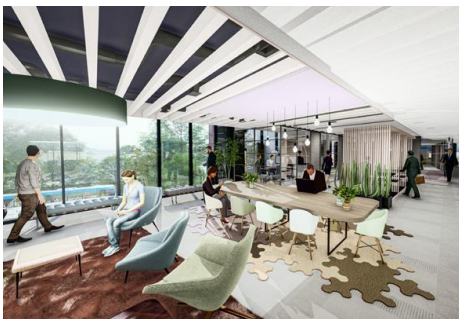
Befimmo has acquired<sup>1</sup> a 94-year long lease on the office building of the "Esprit Courbevoie" project, in state of future completion, for an amount of approximately € 27 million. The expected yield on investment is 5.6%.

The building is characterised by a very exceptional location in the unique and innovative university zone (UCLouvain) in Louvain-la-Neuve, close to the city centre with direct access to the station and the Brussels-Luxembourg motorway. It is part of the new "Esprit Courbevoie" district, jointly developed by BESIX RED and Thomas & Piron Bâtiment.



This office building is a good example of Befimmo's hybrid offer. It will offer approximately 3,300 m<sup>2</sup> of office space and 5,000 m<sup>2</sup> of Silversquare coworking space, a new step in the development of our BELUX network.

The building is scheduled for completion at the end of 2023. Marketing is underway, Befimmo has already held initial discussions with potential clients.



The project has a BREEAM " Very Good " certification.

---

<sup>1</sup> Subject to the usual suspensory conditions.

Befimmo a Regulated Real-Estate Investment Trust (BE-REIT), listed on Euronext Brussels, is a real-estate operator specialising in office buildings, meeting centres and coworking spaces. Those Befimmo Environments are located in Brussels, the Belgian cities and the Grand Duchy of Luxembourg. With its subsidiary, Silversquare, Befimmo aims to develop a Belux network of interconnected workspaces.

As a company that is human, a corporate citizen, and responsible, Befimmo offers its occupants contemporary office spaces and related services in buildings that are sustainable in terms of architecture, location and respect for the environment.

By creating added value for its users, Befimmo also creates value for its shareholders. At 31 December 2020, the fair value of its portfolio was €2.7 billion.



## Contact:



### **Befimmo SA**

Caroline Kerremans | Head of IR & Communication

Chaussée de Wavre 1945 - 1160 Bruxelles | 1945 Waversesteenweg - 1160 Brussel

Tel.: +32(0)2 679 38 60 | [c.kerremans@befimmo.be](mailto:c.kerremans@befimmo.be) | [www.befimmo.be](http://www.befimmo.be)