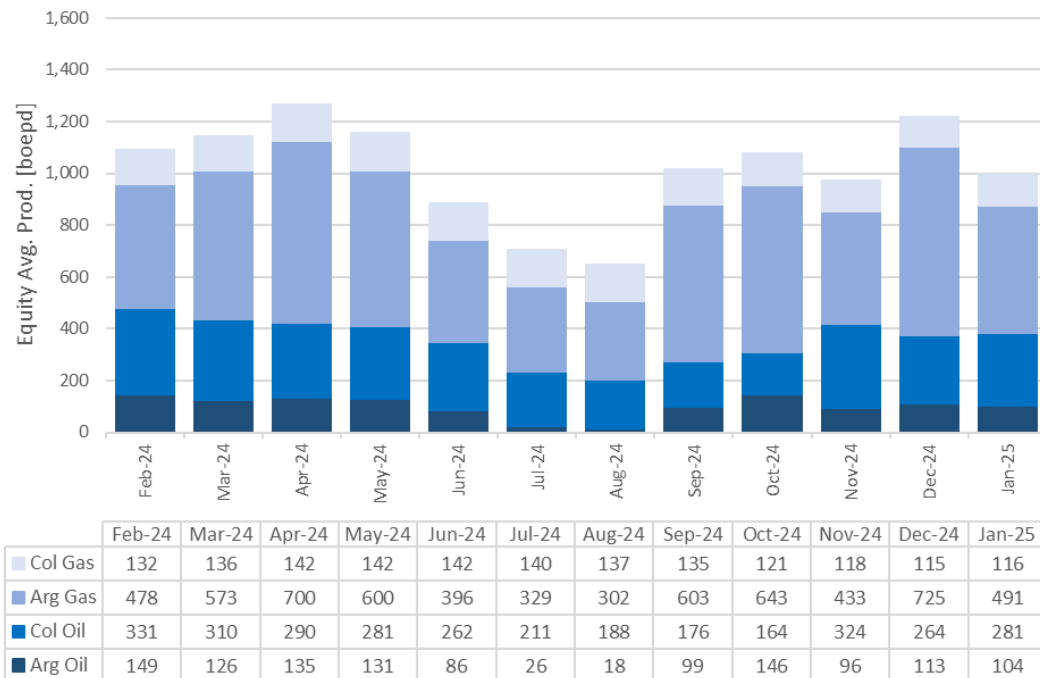
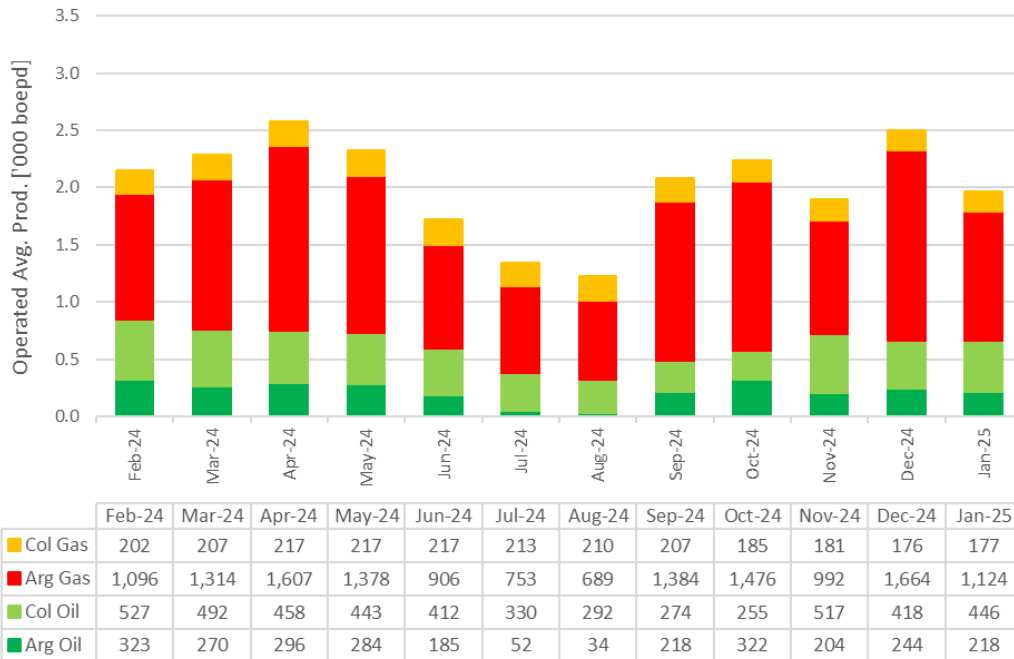


## Production report for January 2025 | Detailed information

Oslo, 28 February 2025

Interoil's detailed monthly production report displays the daily average operated (first graph below) and equity (second graph below) oil and gas production by country for the last twelve months.



[boepd]: barrels of oil equivalents per day (includes liquid and gas)  
 [Operated]: 100% field production operated by Interoil  
 [Equity]: Interoil's share production net of royalties.