



**Bigbank**

**Interim condensed  
consolidated  
financial statements**

**for the period ended  
30 September 2024**



# Bigbank AS

## Interim condensed consolidated financial statements for the period ended 30 September 2024

<b>Business name</b>	Bigbank AS
<b>Registry</b>	Commercial Register of the Republic of Estonia
<b>Registration number</b>	10183757
<b>Date of entry</b>	30 January 1997
<b>LEI code</b>	5493007SWCCN9S3J2748
<b>Address</b>	Riia 2, 51004 Tartu, Estonia
<b>Phone</b>	+372 737 7570
<b>E-mail</b>	info@bigbank.ee
<b>Corporate website</b>	www.bigbank.ee
<b>Financial year</b>	1 January 2024 - 31 December 2024
<b>Reporting period</b>	1 January 2024 - 30 September 2024
<b>Chairman of the management board</b>	Martin Lääts
<b>Core business line</b>	Provision of loans and acceptance of deposits
<b>Auditor</b>	Ernst & Young Baltic AS
<b>Reporting currency</b>	The euro

Interim report is available on the website of Bigbank AS at  
www.bigbank.ee. The version in English is located at  
www.bigbank.eu.

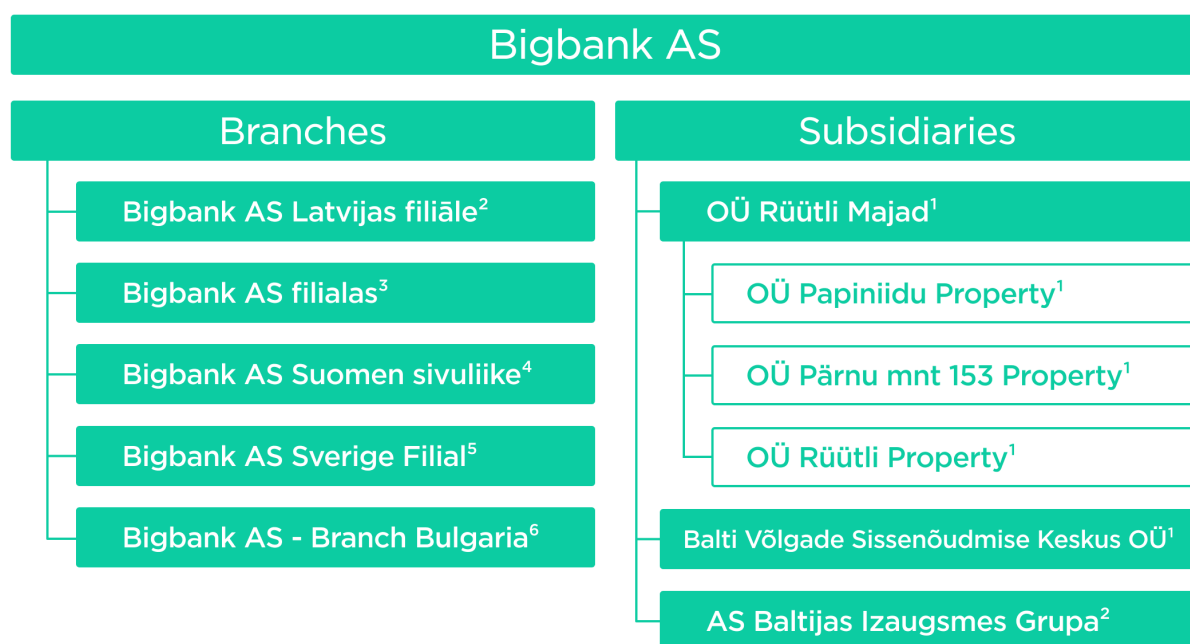
# Contents

<b>BIGBANK GROUP STRUCTURE</b> .....	<b>4</b>
<b>REVIEW OF OPERATIONS</b> .....	<b>5</b>
Significant events.....	5
Key performance indicators and ratios.....	7
Financial review.....	8
Capital ratios.....	9
<b>CONDENSED CONSOLIDATED INTERIM FINANCIAL STATEMENTS</b> .....	<b>11</b>
Consolidated statement of financial position.....	11
Consolidated statement of comprehensive income.....	12
Consolidated statement of cash flows.....	13
Consolidated statement of changes in equity.....	14
Notes to the condensed consolidated interim financial statements.....	15
Note 1. Basis of preparation, material accounting policies, estimates and assumptions and risk management.....	15
Note 2. Correction of errors.....	16
Note 3. Operating segments.....	17
Note 4. Cash and bank balances.....	20
Note 5. Debt instruments.....	20
Note 6. Loans to customers.....	21
Note 7. Loan receivables from customers by due dates.....	22
Note 8. Ageing analysis on loan receivables.....	22
Note 9. Loan receivables from customers by contractual currency.....	23
Note 10. Loss allowances for loan receivables from customers.....	23
Note 11. Property, plant and equipment.....	24
Note 12. Investment properties.....	25
Note 13. Intangible assets.....	25
Note 14. Other assets.....	26
Note 15. Disposal groups and discontinued operations.....	26
Note 16. Loans from banks.....	26
Note 17. Deposits from customers.....	26
Note 18. Subordinated bonds.....	27
Note 19. Other liabilities.....	27
Note 20. Other reserves.....	28
Note 21. Net currency positions.....	28
Note 22. Fair values of assets and liabilities.....	28
Note 23. Contingent liabilities.....	31
Note 24. Interest income.....	31
Note 25. Interest expense.....	31
Note 26. Other operating income.....	31
Note 27. Other operating expenses.....	32
Note 28. Administrative expenses.....	32
Note 29. Earnings per share.....	32
Note 30. Related parties.....	32
<b>STATEMENT BY THE MANAGEMENT BOARD</b> .....	<b>34</b>

# Bigbank Group structure

Bigbank AS (hereinafter also “Bigbank” and “Group”) was founded on 22 September 1992. A licence for operating as a credit institution was issued to Bigbank AS on 27 September 2005. Bigbank is specialised on loans and deposits.

The Group’s structure at the reporting date:



<sup>1</sup> registered in the Republic of Estonia

<sup>2</sup> registered in the Republic of Latvia

<sup>3</sup> registered in the Republic of Lithuania

<sup>4</sup> registered in the Republic of Finland

<sup>5</sup> registered in the Kingdom of Sweden

<sup>6</sup> registered in the Republic of Bulgaria

The branches in Latvia, Lithuania, Finland and Bulgaria offer lending and deposit services similar to those of the parent. The Swedish branch does not issue new loans but continues to service existing loans and offers deposit services. In addition, Bigbank AS provides cross-border deposit services in Germany, the Netherlands and Austria.

The core business of OÜ Rütli Majad and its subsidiaries OÜ Papiniidu Property and OÜ Pärnu mnt 153 Property is property management, and the subsidiaries OÜ Rütli Property and Baltijas Izaugsmes Grupa AS are involved in agricultural land management. Balti Võlgade Sissenõudmise Keskus OÜ is not engaged in active business operations.

# Review of operations

## Significant events

Bigbank ended the first nine months of 2024 with a net profit of 27.6 million euros, compared with 29.4 million euros for the same period in 2023. In the third quarter, Bigbank earned a net profit of 11.8 million euros. Compared to the third quarter of 2023, net profit decreased by 0.6 million euros (-5%).

The most important external factor in the third quarter was the rapid decline in interest rates. The 6-month Euribor fell from 3.7% to 3.1% quarter on quarter, the European Central Bank's key interest rates were cut further in September and deposit rates continued on a downward trend.

These changes have a significant impact on Bigbank and its customers. All home loan customers and most corporate loan customers whose loan interest rates are linked to Euribor are benefiting from an increasingly tangible relief in their loan payments. Customers wishing to deposit their savings, on the other hand, are faced with the fact that interest rates comparable to those offered in previous quarters are no longer available. For Bigbank, this means increasing pressure on interest income, which can be offset primarily by expanding the loan portfolio. At the same time, it is necessary to closely monitor market deposit rates in order to identify opportunities for offers that are attractive to customers and at the same time more cost effective for the Group in a declining interest rate environment.

In terms of other important macroeconomic aspects, Estonia continues to stand out negatively among Bigbank's other markets. The Estonian economy continues to decline, the outlook is increasingly bleak, inflation remains high and consumer confidence is low. The macroeconomic situation in our other markets is much more positive. Latvia and Lithuania, in particular, stand out for their improved indicators and optimistic forecasts. A positive factor common to all countries where we operate is the strength of the labour market, which is critical for banks, as it is essential for the quality of the loan portfolio that loan customers have a stable income.

Bigbank's growth continued in the third quarter. The total gross loan portfolio grew to a record 2.1 billion euros by the end of the quarter, increasing by 158 million euros (+8%) quarter on quarter and by 451 million euros (+28%) year on year. All three main product lines posted solid quarter-on-quarter growth. The corporate loan portfolio grew by 46 million euros (+7%) to 703 million euros, the housing loan portfolio by 78 million euros (+17%) to 534 million euros and the consumer loan portfolio by 36 million euros (+4%) to 837 million euros.

On the deposit side, the term deposit portfolio showed solid growth, increasing by 86 million euros to 1.25 billion euros (+7%) in the third quarter. The savings deposit portfolio decreased by 82 million euros to 1.01 billion euros during the quarter. This was mainly because our deposit customers continued to switch their short-term savings products to 3- to 9-month term deposits to lock in an attractive interest rate for the chosen period. The Group's total deposit portfolio grew by 11 million euros (+0.5%) over the quarter and by 484 million euros (+27%) over the year to 2.27 billion euros.

While growing loan volumes have increased interest income despite declining interest rates, higher deposit volumes have also increased interest expense. Overall, the Group's net interest income increased compared to the third quarter of 2023: net interest income for the third quarter of 2024 was 27.7 million euros (Q3 2023: 26.1 million euros), 1.6 million euros (+6%) higher than a year earlier. Net interest income for the first nine months of 2024 was 79.1 million euros, up 6.3 million euros (+9%) year on year.

In the third quarter, the credit quality of the loan portfolio remained stable compared to the previous quarter. However, compared with the 2023 figures, there was some deterioration in the consumer and corporate loan portfolios, but this is due to a decline in quality in the first quarter of 2024. The quality of the housing loan portfolio remains excellent.

Compared to the end of the second quarter, stage 3 (non-performing) loans increased by 8.3 million euros to 4.9% of total loan receivables at the end of the third quarter (end of Q2: 4.8%). Compared to the end of 2023, stage 3 loans increased by 50.4 million euros. However, based on historical data, the share of stage 3 loans is still low at less than 5% and Bigbank aims to keep the non-performing portfolio below this limit.

## REVIEW OF OPERATIONS

Net loss allowances for loans and provision expenses totalled 4.2 million euros. This represents a significant decrease of 2.1 million euros compared to the previous quarter (6.3 million euros) and a decrease of 0.8 million euros compared to the third quarter of 2023 (5.0 million euros).

The Group's income tax expense increased by 0.6 million euros to 2.4 million euros compared to the third quarter of 2023. The increase was driven by the introduction of advance income tax in Latvia at the end of 2023, which was only reflected in the figures for the fourth quarter of 2023, but will affect all quarters in 2024.

The Group's investment property portfolio, which includes both agricultural land and commercial real estate, stood at 48.7 million euros at the end of the third quarter. During the quarter, the Group sold agricultural land of 0.3 million euros.

There were no changes on the supervisory board or management board of Bigbank AS in the third quarter. The supervisory board has six members: Sven Raba (chairman), Vahur Voll, Juhani Jaeger, Andres Koern, Jaan Liitmäe and Alari Aho. The management board has five members: Martin Länts (chairman), Mart Veskimägi, Argo Kiltsmann, Ingo Pöder and Ken Kanarik.

At the end of the third quarter of 2024, Bigbank had 542 employees: 326 in Estonia, 95 in Lithuania, 88 in Latvia, 18 in Finland, 5 in Sweden and 10 in Bulgaria.

## Key performance indicators and ratios

Financial position indicators (in millions of euros)	30 Sep 2024	31 Dec 2023 restated*	Change
Total assets	2,637.0	2,287.4	15.3%
Loans to customers	2,059.6	1,662.0	23.9%
of which loan portfolio	2,084.1	1,674.8	24.4%
of which interest receivable	30.1	24.7	21.9%
of which loss allowances	-54.6	-37.5	45.6%
Deposits from customers	2,265.8	1,937.4	17.0%
Equity	264.7	244.8	8.1%

Financial performance indicators (in millions of euros)	Q3 2024	Q3 2023	Change	9M 2024	9M 2023	Change
Interest income	46.9	38.1	23.0%	134.5	100.9	33.3%
Interest expense	19.2	12.0	59.4%	55.4	28.1	96.8%
Salaries and associated charges	6.8	6.1	12.2%	19.6	17.7	10.7%
Other operating expenses	2.8	3.9	-26.5%	8.8	11.1	-21.3%
Net loss allowances on loans and financial investments	5.4	5.0	7.7%	19.3	14.0	38.0%
Profit before impairment losses and income tax	19.6	19.2	1.3%	52.4	48.1	8.8%
Net profit	11.8	12.4	-5.5%	27.6	29.4	-6.2%

Ratios	Q3 2024	Q3 2023*	9M 2024	9M 2023*
Return on equity (ROE)	18.2%	22.0%	14.4%	17.7%
Equity multiplier (EM)	10.1	8.9	9.7	8.2
Profit margin (PM)	22.7%	27.5%	18.4%	25.4%
Asset utilization ratio (AU)	7.9%	9.0%	8.1%	8.2%
Return on assets (ROA)	1.8%	2.5%	1.5%	2.1%
Price difference (SPREAD)	4.1%	5.2%	4.2%	5.2%
Cost to income ratio (CIR)	39.2%	38.3%	39.8%	40.4%
Liquidity coverage ratio (LCR)	306.5%	411.4%	306.5%	411.4%
Net stable funding ratio (NSFR)	148.5%	148.8%	148.5%	148.8%

\* Some prior period figures have been restated. For further information, please refer to the notes to the condensed consolidated interim financial statements.

Ratios are presented on an annual basis (i.e. annualised).

## Explanations of ratios:

**Return on equity (ROE, %)** = net profit for the period / quarter / average equity\*100

**Equity multiplier (EM)** = average assets / average equity

**Profit margin (PM, %)** = profit for the period / total income \* 100

**Asset utilisation (AU)** = total income (incl. interest income, fee income, dividend income and other operating income) to total assets

**Return on assets (ROA, %)** = net profit for the period / average assets \* 100

**Price difference (SPREAD)** = ratio of interest income to interest-bearing assets less ratio of interest expense to interest-bearing liabilities

**Cost to income ratio (CIR)** = total operating costs to net income

**Liquidity coverage ratio (LCR)** = high quality liquid asset amount (HQLA) / net liquidity outflow over a 30 days stress period \* 100

**Net stable funding ratio (NSFR, %)** = available stable funding / required stable funding \* 100

## Financial review

### Financial position

At 30 September 2024, the Group's total assets exceeded 2.6 billion euros, having increased by 9.8 million euros (+0.4%) during the quarter. Loans to customers accounted for 78.1% of total assets, exceeding 2.0 billion euros. The proportion of liquid assets (amounts due from banks and debt instruments) was 18.6%, extending to 490.3 million euros. Part of the bank's liquidity buffer has been placed in a portfolio of debt securities which are highly liquid, have investment grade credit ratings, and can be sold at any time. Debt instruments totalled 15.0 million euros at 30 September 2024.

At the end of the third quarter, the Group had 136 thousand loan agreements: 43 thousand in Lithuania, 35 thousand in Latvia, 33 thousand in Estonia, 19 thousand in Finland, 5 thousand in Sweden and 1 thousand in Bulgaria.

Geographical distribution of loans to customers:

- 41.7% Estonia;
- 34.8% Lithuania;
- 15.6% Latvia;
- 6.4% Finland;
- 1.3% Sweden;
- 0.2% Bulgaria.

At 30 September 2024, loans to customers exceeded 2.0 billion euros, comprising of:

- the loan portfolio of 2.1 billion euros with loans to individuals accounting for 66.2% of the total;
- interest receivable on loans of 30.1 million euros;
- loss allowances for loans and interest receivables of 54.6 million euros.

Bigbank's loan portfolio is diversified – at the reporting date the average loan balance was around 15 thousand euros.

To mitigate the risks arising from customers' payment behaviour and to cover potential credit losses, the Group makes loss allowances. Impairment calculations are made conservatively. Where debt recovery proceedings do not yield expected results, the underlying receivable is written off the statement of financial position.

At the end of the third quarter of 2024, the Group's liabilities totalled 2.4 billion euros. Most of the debt raised by the Group, i.e. 2.3 billion euros (95.5%) consisted of deposits. Subordinated bonds totalled 83.4 million euros at 30 September 2024.

At the end of the third quarter of 2024, the Group's equity amounted to 264.7 million euros. The equity to assets ratio was 10.0%.

### Financial performance

Interest income for the third quarter of 2024 was 46.9 million euros, 8.8 million euros (+23.0%) higher than in the same period in 2023. The third-quarter ratio of interest income (annualised) to average interest-earning assets was 7.5% and interest income on the loan portfolio (annualised) accounted for 8.6% of the average loan portfolio.

Interest expense for the third quarter of 2024 was 19.2 million euros, 7.1 million euros (+59.4%) up year-on-year. The increase in interest expense is attributable to a rise in deposit rates, growth in deposits raised and the issue of new subordinated bonds last year. The ratio of interest expense to interest income was 40.9% in the third quarter. The ratio of interest expense to average interest-bearing liabilities (annualised) was 3.3%.

Salaries and associated charges for the third quarter of 2024 were 6.8 million euros. At the end of the period, the Group had 542 employees. Administrative expenses for the third quarter amounted to 2.8 million euros.

Impairment losses for the third quarter were 5.4 million euros, consisting of impairment losses on loan receivables of 4.3 million euros and impairment losses on interest and other receivables of 1.1 million euros.



The Group's net profit for the third quarter of 2024 was 11.8 million euros, 0.6 million euros smaller than a year earlier.

## Capital ratios

### Own funds

The methods used by the Group for calculating own funds are stipulated in regulation (EU) No. 575/2013 of the European Parliament and of the Council on prudential requirements for credit institutions and investment firms (CRR) and Directive 2013/36/EU on access to the activity of credit institutions and the prudential supervision of credit institutions and investment firms (CRD 4) as transposed into Estonian law.

Total own funds, capital ratios and total risk exposure are calculated at the supervisory reporting group level (i.e. not using the definition of a consolidated group as used for the purposes of preparing financial statements).

<i>At (in millions of euros)</i>	<b>30 Sep 2024</b>	<b>31 Dec 2023</b>
Paid-in share capital	8.0	8.0
Capital reserve	0.8	0.8
Prior years retained earnings	226.1	193.5
Other accumulated comprehensive income	2.2	1.8
Other intangible assets	-20.3	-21.7
Profit eligible	11.9	22.0
Adjustments to CET1	-0.8	-0.5
<b>Common equity Tier 1 capital</b>	<b>227.9</b>	<b>203.9</b>
<b>Tier 1 capital</b>	<b>249.2</b>	<b>220.1</b>
<b>Tier 2 capital</b>	<b>62.2</b>	<b>59.0</b>
<b>Total own funds</b>	<b>311.4</b>	<b>279.1</b>

Article 26(2) of Regulation (EU) No 575/2013 of the European Parliament and of the Council (2) has introduced a procedure whereby the permission of the competent authority is required for the inclusion of interim profits or year-end profits in Common Equity Tier 1 (CET1) capital before an institution has taken a formal decision confirming the final profit or loss of the institution for the year. Such permission is granted where the following two conditions are met: profits have been verified by persons independent of the institution that are responsible for the auditing of the accounts of that institution; and the institution has demonstrated that any foreseeable charge or dividend has been deducted from the amount of those profits.

Own funds as at the end of the third quarter of 2024 include net profit for the first six months of this year.

## Total risk exposure amount

At (in millions of euros)	30 Sep 2024	31 Dec 2023
<b>Risk weighted exposure amounts for credit and counterparty credit (standardised approach)</b>		
Receivables from central governments and central banks	2.6	3.1
Receivables from credit institutions and investment firms	5.6	3.6
Receivables from corporates	26.4	33.3
Retail	580.0	525.9
Secured by mortgages on immovable property	604.5	433.9
Exposures in default	54.2	29.9
Items associated with particular high risk	230.5	258.9
Claims on institutions and corporates with a short-term credit assessment	0.7	0.3
Equity	21.6	20.5
Other items	27.6	29.7
<b>Total risk weighted exposure amounts for credit and counterparty credit (standardised approach)</b>	<b>1,553.7</b>	<b>1,339.1</b>
<b>Total risk exposure amount for foreign exchange risk (standardised approach)</b>	<b>11.5</b>	<b>5.9</b>
<b>Total risk exposure amount for operational risk (standardised approach)</b>	<b>149.6</b>	<b>126.3</b>
<b>Total risk exposure amount</b>	<b>1,714.8</b>	<b>1,471.3</b>

## Capital ratios

At	30 Sep 2024	31 Dec 2023
CET1 Capital ratio	13.3%	13.9%
T1 Capital ratio	14.5%	15.0%
Total capital ratio	18.2%	19.0%
Leverage ratio	9.6%	9.6%
Own funds and eligible liabilities to total risk exposure amount (TREA)	18.2%	19.6%
Own funds and eligible liabilities to total leverage ratio exposure (LRE)	11.8%	12.8%

# Condensed consolidated interim financial statements

## Consolidated statement of financial position

At (in millions of euros)	Note	30 Sep 2024	31 Dec 2023 restated*
<b>Assets</b>			
Cash balances at central banks	4	449.2	495.1
Due from other banks	4	26.1	23.6
Debt instruments at FVOCI	5	15.0	15.4
Loans to customers	6-10	2,059.6	1,662.0
Property, plant and equipment	11	8.8	9.4
Investment properties	12	48.7	49.1
Intangible assets	13	27.0	29.2
Current tax assets		0.4	0.4
Other assets	14	2.0	2.9
Assets held for sale	15	0.2	0.3
<b>Total assets</b>	3	<b>2,637.0</b>	<b>2,287.4</b>
<b>Liabilities</b>			
Loans from banks	16	8.4	8.9
Deposits from customers	17	2,265.8	1,937.4
Subordinated bonds	18	83.4	76.1
Current tax liabilities		2.6	2.5
Other liabilities	19	12.1	17.7
<b>Total liabilities</b>	3	<b>2,372.3</b>	<b>2,042.6</b>
<b>Equity</b>			
Paid-in share capital		8.0	8.0
Capital reserve		0.8	0.8
Other reserves	20	2.1	1.8
Retained earnings		253.8	234.2
<b>Total equity</b>		<b>264.7</b>	<b>244.8</b>
<b>Total liabilities and equity</b>		<b>2,637.0</b>	<b>2,287.4</b>

\* Some prior period figures have been restated in connection with the correction of an error. For further information, please refer to note 2 to the consolidated financial statements.

## Consolidated statement of comprehensive income

<i>(in millions of euros)</i>	Note	Q3 2024	Q3 2023	9M 2024	9M 2023
<b>Continuing operations</b>					
Interest income	24	46.9	38.1	134.5	100.9
Interest expense	25	-19.2	-12.0	-55.4	-28.1
<b>Net interest income</b>		<b>27.7</b>	<b>26.1</b>	<b>79.1</b>	<b>72.8</b>
Fee and commission income		2.6	2.2	7.3	6.3
Fee and commission expense		-0.3	-0.1	-0.6	-0.2
<b>Net fee and commission income</b>		<b>2.3</b>	<b>2.1</b>	<b>6.7</b>	<b>6.1</b>
Loss on sale of debt instruments at FVOCI		-	-	-	-0.1
Net gain on financial assets at FVTPL	6	1.0	3.8	4.3	5.3
Net loss on foreign exchange differences		0.1	0.2	-0.1	-0.2
<b>Net income/loss on financial assets</b>		<b>1.1</b>	<b>4.0</b>	<b>4.2</b>	<b>5.0</b>
Other operating income	26	1.2	1.2	3.7	3.4
Other operating expenses	27	-2.2	-2.2	-6.5	-5.1
<b>Total net operating income</b>		<b>30.1</b>	<b>31.2</b>	<b>87.2</b>	<b>82.2</b>
Salaries and associated charges		-6.8	-6.1	-19.6	-17.7
Administrative expenses	28	-2.8	-3.9	-8.8	-11.1
Depreciation, amortisation and impairment	11, 13	-2.1	-2.0	-6.3	-4.4
<b>Total expenses</b>		<b>-11.7</b>	<b>-12.0</b>	<b>-34.7</b>	<b>-33.2</b>
Provision expenses		1.2	-	-0.1	0.1
Gain on change in the fair value of investment properties	0	-	-	-	-1.0
<b>Profit before loss allowances</b>		<b>19.6</b>	<b>19.2</b>	<b>52.4</b>	<b>48.1</b>
Net loss allowances on loans and financial investments		-5.4	-5.0	-19.3	-14.0
<b>Profit before income tax</b>		<b>14.2</b>	<b>14.2</b>	<b>33.1</b>	<b>34.1</b>
Income tax		-2.4	-1.8	-5.5	-4.1
<b>Profit for the period from continuing operations</b>		<b>11.8</b>	<b>12.4</b>	<b>27.6</b>	<b>30.0</b>
Loss from discontinued operations	15	-	-	-	-0.6
<b>Profit for the period</b>		<b>11.8</b>	<b>12.4</b>	<b>27.6</b>	<b>29.4</b>
<b>Other comprehensive income</b>					
Other comprehensive income that may be reclassified subsequently to profit or loss:		0.1	-0.1	0.3	0.4
<i>Exchange differences on translating foreign operations</i>		-	-0.1	0.1	0.2
<i>Changes in the fair value of debt instruments at FVOCI</i>		0.1	-	0.2	0.2
<b>Total comprehensive income for the period</b>		<b>11.9</b>	<b>12.3</b>	<b>27.9</b>	<b>29.8</b>
Basic earnings per share (EUR)	29	147	155	345	367
Diluted earnings per share (EUR)	29	147	155	345	367

**Consolidated statement of cash flows**

<i>(in millions of euros)</i>	Note	9M 2024	9M 2023
<b>Cash flows from operating activities</b>			
Interest received		135.2	95.1
Interest paid		-17.7	-7.0
Salary, administrative and other expenses paid		-43.9	-38.2
Other income and fees received		11.8	12.1
Recoveries of receivables previously written off and proceeds from the sale of portfolio items		1.2	8.1
Received for other assets		3.9	0.7
Loans provided		-797.6	-574.6
Repayment of loans provided		376.1	318.2
Change in mandatory reserves with central banks and related interest receivables	4	-4.1	-3.9
Proceeds from customer deposits		1,561.9	1,207.3
Paid on redemption of deposits		-1,260.2	-808.8
Income tax paid		-5.6	-3.0
Effect of movements in exchange rates		-0.2	-0.2
<b>Net cash used in/from operating activities</b>		<b>-39.2</b>	<b>205.8</b>
<b>Cash flows from investing activities</b>			
Acquisition of property, plant and equipment and intangible assets	11, 13	-2.6	-3.1
Proceeds from sale of property and equipment		-	1.2
Proceeds from sale of investment properties	12	0.1	-
Paid in connection with business combinations		-	-0.5
Acquisition of financial instruments	5	-4.9	-
Proceeds from redemption of financial instruments	5	5.6	4.4
<b>Net cash used in/from investing activities</b>		<b>-1.8</b>	<b>2.0</b>
<b>Cash flows from financing activities</b>			
Proceeds from issue of bonds	18	12.0	31.2
Paid on redemption of bonds	18	-5.0	-
Interest paid on bonds	18	-4.7	-2.6
Repayments of loans from credit institutions	16	-0.5	-0.2
Payments of principal lease liabilities		-0.5	-0.7
Dividends paid		-8.0	-6.0
<b>Net cash used in/from financing activities</b>		<b>-6.7</b>	<b>21.7</b>
Effect of movements in foreign exchange rates		0.1	-0.1
<b>Decrease/increase in cash and cash equivalents</b>		<b>-47.6</b>	<b>229.4</b>
Cash and cash equivalents at beginning of period		503.3	164.7
<b>Cash and cash equivalents at end of period</b>	4	<b>455.7</b>	<b>394.1</b>

## Consolidated statement of changes in equity

<i>(in millions of euros)</i>	Attributable to equity holders of the parent				Total
	Share capital	Statutory capital reserve	Other reserves	Retained earnings	
<b>Balance at 1 January 2023</b>	<b>8.0</b>	<b>0.8</b>	<b>3.4</b>	<b>199.8</b>	<b>212.0</b>
Correction of an error (note 2)	-	-	-	-3.0	-3.0
Restated balance at 1 January 2023	8.0	0.8	3.4	196.8	209.0
Profit for the period	-	-	-	29.4	29.4
<b>Other comprehensive income</b>					
Exchange differences on translating foreign operations	-	-	0.2	-	0.2
Changes in the fair value of debt instruments at FVOCI	-	-	0.2	-	0.2
Revaluation of land and buildings	-	-	-2.4	2.4	-
<b>Total other comprehensive income</b>	<b>-</b>	<b>-</b>	<b>-2.0</b>	<b>2.4</b>	<b>0.4</b>
<b>Total comprehensive income for the period</b>	<b>-</b>	<b>-</b>	<b>-2.0</b>	<b>31.8</b>	<b>29.8</b>
Dividend distribution	-	-	-	-6.0	-6.0
Total transactions with owners	-	-	-	-6.0	-6.0
<b>Balance at 30 September 2023</b>	<b>8.0</b>	<b>0.8</b>	<b>1.4</b>	<b>222.6</b>	<b>232.8</b>
<b>Profit for the period 1 October - 31 December 2023</b>	<b>-</b>	<b>-</b>	<b>-</b>	<b>11.3</b>	<b>11.3</b>
Other comprehensive income for the period 1 October - 31 December 2023	-	-	0.4	0.3	0.7
<b>Balance at 31 December 2023, restated</b>	<b>8.0</b>	<b>0.8</b>	<b>1.8</b>	<b>234.2</b>	<b>244.8</b>
<b>Balance at 1 January 2024</b>	<b>8.0</b>	<b>0.8</b>	<b>1.8</b>	<b>234.2</b>	<b>244.8</b>
Profit for the period	-	-	-	27.6	27.6
<b>Other comprehensive income</b>					
Exchange differences on translating foreign operations	-	-	0.1	-	0.1
Changes in the fair value of debt instruments at FVOCI	-	-	0.2	-	0.2
<b>Total other comprehensive income</b>	<b>-</b>	<b>-</b>	<b>0.3</b>	<b>-</b>	<b>0.3</b>
<b>Total comprehensive income for the period</b>	<b>-</b>	<b>-</b>	<b>0.3</b>	<b>27.6</b>	<b>27.9</b>
Dividend distribution	-	-	-	-8.0	-8.0
<b>Total transactions with owners</b>	<b>-</b>	<b>-</b>	<b>-</b>	<b>-8.0</b>	<b>-8.0</b>
<b>Balance at 30 September 2024</b>	<b>8.0</b>	<b>0.8</b>	<b>2.1</b>	<b>253.8</b>	<b>264.7</b>

## Notes to the condensed consolidated interim financial statements

### Note 1. Basis of preparation, material accounting policies, estimates and assumptions and risk management

#### Basis of preparation

The condensed consolidated interim financial statements of Bigbank AS at and for the nine months ended 30 September 2024 have been prepared in accordance with the international financial reporting standard IAS 34 *Interim Financial Reporting* as adopted by the European Union. The interim financial statements do not include all the information required for full annual financial statements and they should be read in conjunction with the Group's latest published annual financial statements as at and for the year ended 31 December 2023, which have been prepared in accordance with International Financial Reporting Standards (IFRS EU).

The accounting policies adopted in the preparation of the interim condensed consolidated financial statements are consistent with those followed in the preparation of the Group's annual consolidated financial statements for the year ended 31 December 2023, except for the adoption of new standards and interpretations effective as of 1 January 2024. The Group has not early adopted any standard, interpretation or amendment that has been issued but is not yet effective.

This interim report has not been audited or otherwise reviewed by auditors and only includes the condensed consolidated financial statements of the Group. The financial statements are presented in millions of euros, unless otherwise indicated.

#### *New standards and amendments*

A number of amendments to standards (IAS 1, IAS 7, IFRS 7 and IFRS 16) became applicable for the reporting period. The Group did not have to change its accounting policies or make retrospective adjustments as a result of adopting these amendments.

#### Significant accounting estimates and assumptions

The preparation of financial statements requires management to make judgements, estimates and assumptions that affect the application of policies and reported amounts of assets and liabilities and income and expenses. The estimates and associated assumptions are based on historical experience and various other factors that are believed to be reasonable under the circumstances, the results of which form the basis of making estimates about the carrying values of assets and liabilities that are not readily apparent from other sources. Actual results may differ from these estimates.

The impact of management's estimates is most critical regarding loss allowances for loans and interest receivables. The measurement of expected credit loss (ECL) allowance for financial assets measured at amortised cost and FVOCI is a significant estimate that involves determination of methodology, models and data inputs. The loss allowances are disclosed in notes 6, 8 and 10. The following components have a major impact on credit loss allowance: definition of default, determining criteria for significant increase in credit risk, probability of default (PD), exposure at default (EAD), and loss given default (LGD), establishing groups of similar financial assets for the purpose of measuring ECL, as well as models of macro-economic scenarios. The Group regularly reviews and validates the models and inputs to the models to reduce any differences between expected credit loss estimates and actual credit loss experience. The Group used supportable forward-looking information for measurement of ECL, primarily an outcome of its own macro-economic forecasting model. There were no significant changes in either methodology or models during the current reporting period.

#### Risk management

The primary objectives of risk management are to protect the Group's financial strength and limit the impact of potential adverse events on the Group's capital, liquidity and financial results, and to ensure that the outcomes of risk-taking activities are consistent with the Group's strategies and risk appetite, and that there is an appropriate balance between risk and reward.

Effective risk and capital management is an essential component of the Group's management. It has a crucial impact on the long-term results and the sustainability of the business model.

Risk taking is an unavoidable part of the Group's business activities and risk management supports business activities and decision making, ensuring that there is as clear information as possible about the risk and reward of different choices. Risk management is an integral part of the strategic decision making and daily business decision making process.

The following principles are followed in risk and capital management:

- Well-balanced portfolio. The Group maintains a well-diversified credit portfolio and takes limited risk in financial markets. Since uncertain changes in any individual position may seriously affect Group's overall risk position, over-reliance on single counterparties and concentrations of risk are avoided.
- Risk profile by significant countries of operation and significant product groups. The credit portfolio is reasonably balanced between different countries of operation and products. The management board determines at least annually the maximum exposure limits for individual countries of operation and significant product groups. Any target risk profile change must take into account established limits and potential effects. The actual risk profile is regularly measured against such limits.
- Quality of assets. Any changes in the target risk profile that may significantly affect the quality of assets are properly analysed and assessed before the changes are made.
- Strong liquidity position. The Group maintains a conservative liquidity risk profile and a sufficient portfolio of liquid assets at all times. Concentrations of funding and liquid assets are avoided.
- Adequate capital. The Group maintains a strong and rather conservative capitalisation level (capital adequacy). The Group makes sure that it has adequate capital to cover its risks and comply with regulatory and internal capital requirements.
- Reasonable risk level. The Group does not accept unreasonably high risk even when there is potential for exceptionally high profit as a result of risk taking. Risks which the Group cannot assess or manage adequately or for which it does not have sufficient experience or knowledge are avoided.
- Low risk appetite to specified types of risks. The Group has low risk appetite to certain risk types as specified in the policies for individual risks.
- Reliable structure of the statement of financial position and leverage. The Group is required to maintain the structure of the statement of financial position and leverage that supports the strong liquidity position, adequate capitalisation and avoids excessive leverage. All changes in the risk appetite that might have significant effect to the structure of the statement of financial position and leverage shall be properly assessed.
- Safeguarding the financial strength and stability. The primary objective of risk management is protection of the Group's financial strength. The Group shall control risks in order to limit the impact of potential adverse events on the capital, liquidity and financial results.

The main risk the Group has identified in its operations is credit risk, which arises in lending to customers. Other material risks are market risk (including IRRBB, i.e. interest rate risk in the banking book), liquidity risk, operational risk, reputational risk, business and strategic risk. In order to cover these risks Group holds a capital buffer and liquidity reserves for unforeseen events. Risks are assessed and identified regularly, as a part of its internal capital adequacy assessment process (ICAAP) and internal liquidity assessment process (ILAAP).

Risk and capital management principles for the Group are established in the risk and capital management policy approved by the supervisory board of Bigbank AS.

There were no significant changes in the risk profile during the reporting period.

## Note 2. Correction of errors

In 2024, the Group identified an error in the calculations for the application of the effective interest method regarding the accounting treatment of income and costs directly associated with the issuance of loans to customers. The error was corrected in the first quarter of 2024. As a result of the correction, in the opening balances as at 1 January 2023, loans to customers decreased by 3.4 million euros, current tax liabilities by 0.4 million euros and retained earnings by 3.0 million euros. In the closing balances as at 31 December 2023, loans to customers decreased by 3.7 million euros, current tax liabilities by 0.5 million euros and retained



earnings by 3.2 million euros. In total, profit for 2023 decreased by 0.2 million euros and profit for 2022 by 3.0 million euros. The effect of the corrections on prior periods was estimated to be immaterial. Therefore, the Group has not presented the restated opening balances for the prior period in its consolidated statement of financial position.

The errors were corrected by restating line items in the consolidated financial statements as follows:

### Consolidated statement of financial position at 1 January 2023

	As previously reported	Adjustments	1 January 2023 restated
<b>Assets</b>			
Loans to customers	1,359.4	-3.4	1,356.0
<b>Total assets</b>	<b>1,645.0</b>	<b>-3.4</b>	<b>1,641.6</b>
<b>Liabilities</b>			
Current tax liabilities	0.4	-0.4	-
<b>Total liabilities</b>	<b>1,433.0</b>	<b>-0.4</b>	<b>1,432.6</b>
<b>Equity</b>			
Retained earnings	199.8	-3.0	196.8
<b>Total equity</b>	<b>212.0</b>	<b>-3.0</b>	<b>209.0</b>
<b>Total liabilities and equity</b>	<b>1,645.0</b>	<b>-3.4</b>	<b>1,641.6</b>

### Consolidated statement of financial position at 31 December 2023

	As previously reported	Adjustments	31 December 2023 restated
<b>Assets</b>			
Loans to customers	1,665.7	-3.7	1,662.0
<b>Total assets</b>	<b>2,291.1</b>	<b>-3.7</b>	<b>2,287.4</b>
<b>Liabilities</b>			
Current tax liabilities	3.0	-0.5	2.5
<b>Total liabilities</b>	<b>2,043.1</b>	<b>-0.5</b>	<b>2,042.6</b>
<b>Equity</b>			
Retained earnings	237.3	-3.2	234.1
<b>Total equity</b>	<b>248.0</b>	<b>-3.2</b>	<b>244.8</b>
<b>Total liabilities and equity</b>	<b>2,291.1</b>	<b>-3.2</b>	<b>2,287.4</b>

### Note 3. Operating segments

Operating segments are components of the Group for which separate financial information is available, which enables the management board and the supervisory board to regularly review their operating results. The Group's banking operations are divided into two main segments: retail banking and corporate banking. In addition, there is the segment of other activities.

Segment reporting is based on internal reports to the Group's executive management. The Group's chief operating decision maker is the management board of Bigbank AS, which regularly reviews the Group's internally generated financial information to assess operating results, including the performance of operating segments, and to allocate resources efficiently. The Group's banking operations are divided into two operating segments based on the categories of customers served: retail banking and corporate banking. The retail banking segment covers all countries where Bigbank operates and the corporate banking segment covers the Baltic countries. Both segments offer loan products to customers and raise deposits. Group entities that are involved in investment property management and agriculture and units that support banking

operations (including the treasury) form the segment of other activities. Intersegment loans and services as well as receivables and liabilities are presented as eliminations in the table below.

The result of an operating segment is the segment's net profit, which comprises financial items directly attributable to the segment. The retail and corporate banking segments also include financial items (other income and expenses, operating expenses and income tax expense), which are allocated to segments consistent with their nature based on the size of the loan portfolio, the number of loans or the number of staff associated with the segment. The allocation is based on internal transfer prices. The prices applied in intersegment transactions (including the provision of loans and services to Group companies) do not differ significantly from market prices. Segment assets and liabilities comprise assets and liabilities which are directly attributable to the segment as well as assets and liabilities allocated to the segment on the basis of the size of the loan portfolio.

### Segment profit for Q3 2024

	Retail banking	Corporate banking	Other activities	Elimination	Total
Interest income	32.9	14.5	0.1	-0.6	46.9
Interest expense	-13.6	-5.5	-0.7	0.6	-19.2
<b>Net interest income/expense</b>	<b>19.3</b>	<b>9.0</b>	<b>-0.6</b>	-	<b>27.7</b>
Fee and commission income	2.6	-	-	-	2.6
Fee and commission expense	-0.2	-0.1	-	-	-0.3
<b>Net fee and commission income/expense</b>	<b>2.4</b>	<b>-0.1</b>	-	-	<b>2.3</b>
Net gain on financial assets and loss on derecognition of non-financial assets	-	0.4	0.7	-	1.1
Other operating income and expenses	-1.6	-	0.7	-0.1	-1.0
<b>Net operating income</b>	<b>20.1</b>	<b>9.3</b>	<b>0.8</b>	<b>-0.1</b>	<b>30.1</b>
Expenses and expenses on provisions	-7.6	-3.0	-	0.1	-10.5
<b>Profit before loss allowances</b>	<b>12.5</b>	<b>6.3</b>	<b>0.8</b>	-	<b>19.6</b>
Net loss allowances for loans and financial investments	-5.4	-	-	-	-5.4
<b>Profit before income tax</b>	<b>7.1</b>	<b>6.3</b>	<b>0.8</b>	-	<b>14.2</b>
Income tax	-1.5	-0.9	-	-	-2.4
<b>Profit for the period from continuing operations</b>	<b>5.6</b>	<b>5.4</b>	<b>0.8</b>	-	<b>11.8</b>

### Segment profit for 9 months 2024

	Retail banking	Corporate banking	Other activities	Elimination	Total
Interest income	95.1	41.1	0.2	-1.9	134.5
Interest expense	-39.6	-15.4	-2.3	1.9	-55.4
<b>Net interest income/expense</b>	<b>55.5</b>	<b>25.7</b>	<b>-2.1</b>	-	<b>79.1</b>
Fee and commission income	7.3	-	-	-	7.3
Fee and commission expense	-0.4	-0.2	-	-	-0.6
<b>Net fee and commission income/expense</b>	<b>6.9</b>	<b>-0.2</b>	-	-	<b>6.7</b>
Net gain on financial assets and loss on derecognition of non-financial assets	-	3.3	0.9	-	4.2
Other operating income and expenses	-4.5	-	2.2	-0.5	-2.8
<b>Net operating income</b>	<b>57.9</b>	<b>28.8</b>	<b>1.0</b>	<b>-0.5</b>	<b>87.2</b>
Expenses and expenses on provisions	-26.1	-9.0	-0.2	0.5	-34.8
<b>Profit before loss allowances</b>	<b>31.8</b>	<b>19.8</b>	<b>0.8</b>	-	<b>52.4</b>
Net loss allowances for loans and financial investments	-19.2	-0.1	-	-	-19.3
<b>Profit before income tax</b>	<b>12.6</b>	<b>19.7</b>	<b>0.8</b>	-	<b>33.1</b>
Income tax	-3.5	-2.0	-	-	-5.5
<b>Profit for the period from continuing operations</b>	<b>9.1</b>	<b>17.7</b>	<b>0.8</b>	-	<b>27.6</b>

## Segment profit for Q3 2023

	Retail banking	Corporate banking	Other activities	Elimination	Total
Interest income	26.6	12.0	0.1	-0.6	38.1
Interest expense	-8.6	-3.6	-0.4	0.6	-12.0
<b>Net interest income/expense</b>	<b>18.0</b>	<b>8.4</b>	<b>-0.3</b>	-	<b>26.1</b>
Fee and commission income	2.2	-	-	-	2.2
Fee and commission expense	-	-0.1	-	-	-0.1
<b>Net fee and commission income/expense</b>	<b>2.2</b>	<b>-0.1</b>	-	-	<b>2.1</b>
Net gain on financial assets and loss on derecognition of non-financial assets	-	3.7	0.3	-	4.0
Other income	0.3	-	1.0	-0.1	1.2
Other expenses	-1.9	-	-0.3	-	-2.2
<b>Net operating income</b>	<b>18.6</b>	<b>12.0</b>	<b>0.7</b>	<b>-0.1</b>	<b>31.2</b>
Operating expenses and expenses on provisions	-8.9	-3.0	-0.2	0.1	-12.0
<b>Profit before loss allowances</b>	<b>9.7</b>	<b>9.0</b>	<b>0.5</b>	-	<b>19.2</b>
Net loss allowances for loans and financial investments	-5.0	-	-	-	-5.0
<b>Profit before income tax</b>	<b>4.7</b>	<b>9.0</b>	<b>0.5</b>	-	<b>14.2</b>
Income tax	-0.8	-1.0	-	-	-1.8
<b>Profit for the period from continuing operations</b>	<b>3.9</b>	<b>8.0</b>	<b>0.5</b>	-	<b>12.4</b>

## Segment profit for 9 months 2023

	Retail banking	Corporate banking	Other activities	Elimination	Total
Interest income	71.9	30.5	0.2	-1.7	100.9
Interest expense	-19.6	-8.5	-1.7	1.7	-28.1
<b>Net interest income/expense</b>	<b>52.3</b>	<b>22.0</b>	<b>-1.5</b>	-	<b>72.8</b>
Fee and commission income	6.3	-	-	-	6.3
Fee and commission expense	-0.1	-0.1	-	-	-0.2
<b>Net fee and commission income/expense</b>	<b>6.2</b>	<b>-0.1</b>	-	-	<b>6.1</b>
Net gain on financial assets and loss on derecognition of non-financial assets	-	5.0	-	-	5.0
Other income	0.7	-	3.2	-0.5	3.4
Other expenses	-4.0	-	-1.1	-	-5.1
<b>Net operating income</b>	<b>55.2</b>	<b>26.9</b>	<b>0.6</b>	<b>-0.5</b>	<b>82.2</b>
Operating expenses and expenses on provisions	-25.2	-8.2	-0.2	0.5	-33.1
Gain on change in fair value of investment property	-	-	-1.0	-	-1.0
<b>Profit before loss allowances</b>	<b>30.0</b>	<b>18.7</b>	<b>-0.6</b>	-	<b>48.1</b>
Net loss allowances for loans and financial investments	-14.0	-	-	-	-14.0
<b>Profit before income tax</b>	<b>16.0</b>	<b>18.7</b>	<b>-0.6</b>	-	<b>34.1</b>
Income tax	-2.1	-2.0	-	-	-4.1
<b>Profit for the period from continuing operations</b>	<b>13.9</b>	<b>16.7</b>	<b>-0.6</b>	-	<b>30.0</b>

**Assets and liabilities of segments at 30 September 2024**

	Retail banking	Corporate banking	Other activities	Elimination	Total
Total assets	1,734.9	857.1	80.8	-35.8	2,637.0
Total liabilities	2,300.3	68.5	36.3	-32.8	2,372.3

**Assets and liabilities of segments at 30 September 2023, restated**

	Retail banking	Corporate banking	Other activities	Elimination	Total
Total assets	1,326.7	743.4	85.8	-40.1	2,115.8
Total liabilities	1,822.2	42.8	54.6	-38.0	1,881.6

**Note 4. Cash and bank balances**

	30 Sep 2024	31 Dec 2023
<b>Cash balances at central banks</b>	<b>449.2</b>	<b>495.1</b>
Of which mandatory reserve deposits	19.4	15.2
Of which surplus on mandatory reserves*	3.5	4.7
Of which overnight deposits	426.3	475.2
<b>Cash balances at banks</b>	<b>26.1</b>	<b>23.6</b>
Of which cash demand and overnight deposits*	25.9	23.4
Of which term deposits	0.2	0.2
<b>Total</b>	<b>475.3</b>	<b>518.7</b>
<b>Of which cash and cash equivalents</b>	<b>455.7</b>	<b>503.3</b>

\* Cash equivalents

**Note 5. Debt instruments**

At	30 Sep 2024	31 Dec 2023
<b>Debt instruments</b>	<b>15.0</b>	<b>15.4</b>
<b>Debt instruments by issuer</b>		
Government bonds	9.9	9.9
Credit institutions' bonds	2.6	-
Non-financial corporations' bonds	2.5	5.5
<b>Debt instruments by currency</b>		
EUR (euro)	13.4	12.0
SEK (Swedish krona)	1.6	3.4
<b>Debt instruments by rating</b>		
Aaa-Aa3	3.6	5.4
A1-A3	8.8	8.7
Baa1-Baa3	2.6	1.3

**Note 6. Loans to customers**

At	30 Sep 2024	31 Dec 2023
Measured at amortised cost	2,004.9	1,604.1
Measured at FVTPL	54.7	57.9
<b>Loans to customers</b>	<b>2,059.6</b>	<b>1,662.0</b>

**Loans to customers at 30 September 2024**

	Estonia	Lithuania	Latvia	Finland	Sweden	Bulgaria	Total
<b>Loans at amortised cost</b>							
Loan receivables from customers	814.9	708.6	330.1	137.5	33.2	5.1	2,029.4
Loss allowances for loan receivables	-14.9	-8.0	-11.5	-7.5	-6.5	-1.6	-50.0
Interest receivable from customers	6.6	17.2	3.0	1.3	1.6	0.4	30.1
Loss allowances for interest receivables	-1.6	-0.8	-0.9	-0.3	-0.8	-0.2	-4.6
<b>Total</b>	<b>805.0</b>	<b>717.0</b>	<b>320.7</b>	<b>131.0</b>	<b>27.5</b>	<b>3.7</b>	<b>2,004.9</b>
<b>Loans at FVTPL</b>							
Loan receivables from customers	54.7						54.7
<b>Total</b>	<b>54.7</b>						<b>54.7</b>
<b>Total loans to customers</b>	<b>859.7</b>	<b>717.0</b>	<b>320.7</b>	<b>131.0</b>	<b>27.5</b>	<b>3.7</b>	<b>2,059.6</b>
Share of region	41.7%	34.8%	15.6%	6.4%	1.3%	0.2%	100.0%

**Loans to customers at 31 December 2023, restated**

	Estonia	Lithuania	Latvia	Finland	Sweden	Bulgaria	Total
<b>Loans at amortised cost</b>							
Loan receivables from customers	651.1	557.7	249.7	114.6	38.4	5.4	1,616.9
Loss allowances for loan receivables	-9.9	-6.0	-7.1	-5.6	-5.0	-1.3	-34.9
Interest receivable from customers	4.8	15.9	2.2	0.9	0.6	0.3	24.7
Loss allowances for interest receivables	-0.9	-0.6	-0.5	-0.1	-0.3	-0.2	-2.6
<b>Total</b>	<b>645.1</b>	<b>567.0</b>	<b>244.3</b>	<b>109.8</b>	<b>33.7</b>	<b>4.2</b>	<b>1,604.1</b>
<b>Loans at FVTPL</b>							
Loan receivables from customers	57.9						57.9
<b>Total</b>	<b>57.9</b>						<b>57.9</b>
<b>Total loans to customers</b>	<b>703.0</b>	<b>567.0</b>	<b>244.3</b>	<b>109.8</b>	<b>33.7</b>	<b>4.2</b>	<b>1,662.0</b>
Share of region	42.3%	34.1%	14.7%	6.6%	2.0%	0.3%	100.0%

**Note 7. Loan receivables from customers by due dates**

At	30 Sep 2024	31 Dec 2023
Past due loan payments	55.1	37.9
Contractual principal payments cash flows of loans		
Less than 1 month	30.0	14.0
1-12 months	241.9	231.1
1-2 years	277.7	222.9
2-5 years	770.8	650.7
More than 5 years	708.6	518.2
<b>Total</b>	<b>2,084.1</b>	<b>1,674.8</b>

**Note 8. Ageing analysis on loan receivables****Ageing analysis at 30 September 2024**

	Not past due	30 days or less	31-60 days	61-90 days	Over 90 days	Total
<b>Loans at amortised cost</b>						
<b>Unsecured loans</b>						
Loan portfolio	622.1	29.3	6.9	3.7	47.1	709.1
Loss allowance	-15.0	-3.8	-2.9	-1.7	-24.6	-48.0
<b>Loans secured with real estate</b>						
Loan portfolio	1,134.6	19.0	4.0	0.4	5.5	1,163.5
Loss allowance	-0.4	-	-	-	-0.1	-0.5
<b>Loans against other collaterals</b>						
Loan portfolio	142.0	8.6	2.4	0.8	3.0	156.8
Loss allowance	-0.6	-0.2	-0.2	-0.1	-0.4	-1.5
<b>Loans at FVTPL</b>						
Loan portfolio	54.7	-	-	-	-	54.7
<b>Total loan portfolio</b>	<b>1,953.4</b>	<b>56.9</b>	<b>13.3</b>	<b>4.9</b>	<b>55.6</b>	<b>2,084.1</b>
Total loss allowance	-16.0	-4.0	-3.1	-1.8	-25.1	-50.0

**Ageing analysis at 31 December 2023, restated**

	Not past due	30 days or less	31-60 days	61-90 days	Over 90 days	Total
<b>Loans at amortised cost</b>						
<b>Unsecured loans</b>						
Loan portfolio	585.6	28.0	8.4	4.5	28.4	654.9
Loss allowance	-11.3	-2.9	-3.2	-2.0	-14.2	-33.6
<b>Loans secured with real estate</b>						
Loan portfolio	822.1	18.1	4.9	1.0	0.6	846.7
Loss allowance	-0.3	-	-	-	-	-0.3
<b>Loans against other collaterals</b>						
Loan portfolio	102.6	8.1	2.4	0.7	1.5	115.3
Loss allowance	-0.4	-0.1	-0.2	-0.1	-0.2	-1.0
<b>Loans at FVTPL</b>						
Loan portfolio	57.9	-	-	-	-	57.9
<b>Total loan portfolio</b>	<b>1,568.2</b>	<b>54.2</b>	<b>15.7</b>	<b>6.2</b>	<b>30.5</b>	<b>1,674.8</b>
Total loss allowance	-12.0	-3.0	-3.4	-2.1	-14.4	-34.9

**Note 9. Loan receivables from customers by contractual currency**

At	30 Sep 2024	31 Dec 2023
<b>Loans at amortised cost</b>		
EUR (euro)	1,991.1	1,573.1
SEK (Swedish krona)	33.2	38.4
BGN (Bulgarian lev)	5.1	5.4
<b>Loans at FVTPL</b>		
EUR (euro)	54.7	57.9
<b>Total loan receivables from customers</b>	<b>2,084.1</b>	<b>1,674.8</b>

**Note 10. Loss allowances for loan receivables from customers****Loss allowances at 30 September 2024**

	Loan receivables	Interest receivables	Total receivables subject to impairment	Total loss allowances
Stage 1	1,853.0	19.4	1,872.4	-12.2
Stage 2	85.5	1.5	87.0	-5.5
Stage 3	90.9	9.2	100.1	-36.9
<b>Total</b>	<b>2,029.4</b>	<b>30.1</b>	<b>2,059.5</b>	<b>-54.6</b>

**Loss allowances at 31 December 2023, restated**

	Loan receivables	Interest receivables	Total receivables subject to impairment	Total loss allowances
Stage 1	1,523.0	18.2	1,541.2	-9.9
Stage 2	53.0	1.2	54.2	-6.0
Stage 3	44.6	5.3	49.9	-21.6
<b>Total</b>	<b>1,620.6</b>	<b>24.7</b>	<b>1,645.3</b>	<b>-37.5</b>

**Development of allowances for 9 months 2024**

	Opening balance at 1 Jan 2024	Increases due to origination	Decrease due to derecognition repayments and disposals	Changes due to change in credit risk (net)	Decrease due to write-off	Closing balance
Stage 1	-9.9	-4.7	0.9	1.5	-	-12.2
Stage 2	-6.1	-0.4	0.2	0.8	-	-5.5
Stage 3	-21.5	-0.9	0.6	-16.6	1.5	-36.9
<b>Total</b>	<b>-37.5</b>	<b>-6.0</b>	<b>1.7</b>	<b>-14.3</b>	<b>1.5</b>	<b>-54.6</b>

## Development of allowances for 12 months 2023

	Opening balance at 1 Jan 2023	Increases due to origination	Decrease due to derecognition repayments and disposals	Changes due to change in credit risk (net)	Decrease due to write-off	Closing balance
Stage 1	-8.5	-4.6	1.2	1.9	0.1	-9.9
Stage 2	-6.1	-1.2	0.3	-0.8	1.7	-6.1
Stage 3	-12.4	-2.0	0.7	-12.5	4.7	-21.5
<b>Total</b>	<b>-27.0</b>	<b>-7.8</b>	<b>2.2</b>	<b>-11.4</b>	<b>6.5</b>	<b>-37.5</b>

## Note 11. Property, plant and equipment

At	30 Sep 2024	31 Dec 2023
Buildings	6.1	6.3
Right-of-use assets: office premises	1.6	1.7
Other items	1.1	1.4
<b>Total</b>	<b>8.8</b>	<b>9.4</b>

Other items comprise computers, office equipment and furniture and other fixtures and fittings. Leased office premises are recognized as right-of-use assets.

## Land and buildings and other items

	Land	Buildings	Other items	Total
<b>Cost</b>				
Balance at 1 January 2023	9.6	6.2	5.1	20.9
Purchases	-	-	2.0	2.0
Sales	-	-	-0.2	-0.2
Derecognition	-	-	-1.7	-1.7
Revaluation recognised in other comprehensive income	-	0.5	-	0.5
Transfer to investment property (note 12)*	-9.6	-0.4	-	-10.0
<b>Balance at 31 December 2023</b>	<b>-</b>	<b>6.3</b>	<b>5.2</b>	<b>11.5</b>
Balance at 1 January 2024	-	6.3	5.2	11.5
Purchases	-	-	0.2	0.2
Sales	-	-	-0.1	-0.1
<b>Balance at 30 September 2024</b>	<b>-</b>	<b>6.3</b>	<b>5.3</b>	<b>11.6</b>
<b>Depreciation</b>				
Balance at 1 January 2023	-	-	-3.7	-3.7
Depreciation charge for the period	-	-0.2	-0.6	-0.8
Sales	-	-	0.2	0.2
Derecognition	-	-	0.3	0.3
Transfer**	-	0.2	-	0.2
<b>Balance at 31 December 2023</b>	<b>-</b>	<b>-</b>	<b>-3.8</b>	<b>-3.8</b>
Balance at 1 January 2024	-	-	-3.8	-3.8
Depreciation charge for the period	-	-0.2	-0.4	-0.6
<b>Balance at 30 September 2024</b>	<b>-</b>	<b>-0.2</b>	<b>-4.2</b>	<b>-4.4</b>
<b>Carrying amount</b>				
Balance at 1 January 2023	9.6	6.2	1.4	17.2
Balance at 31 December 2023	-	6.3	1.4	7.7
<b>Balance at 30 September 2024</b>	<b>-</b>	<b>6.1</b>	<b>1.1</b>	<b>7.2</b>



\* Agricultural land plots which used to be in the Group's own use were rented out to third parties and were therefore transferred to the class of investment property. In connection with the Group's relocation to new premises in Tallinn, the previously used office premises were also transferred to the class of investment property.

\*\* Buildings are measured using the revaluation model. Accumulated depreciation at the revaluation date was eliminated against the gross carrying amount of the revalued assets, see note 22.

### Right-of-use assets

	2024	2023
Carrying amount at 1 January	1.7	1.1
Additions	0.3	1.2
Depreciation charge	-0.5	-0.6
Price adjustment	0.1	-
<b>Carrying amount at end of period</b>	<b>1.6</b>	<b>1.7</b>

### Note 12. Investment properties

At	2024	2023
Opening balance at 1 January	49.1	35.5
Sales	-0.4	-
Transfer from office premises to investment property (note 11)	-	0.4
Transfer from land to investment property (note 11)	-	9.8
Net gain on fair value adjustments (note 22)	-	3.4
<b>Closing balance at end of period</b>	<b>48.7</b>	<b>49.1</b>

Investment properties include buildings in Tallinn, Tartu and Pärnu and agricultural land.

### Note 13. Intangible assets

	2024	2023
<b>Cost at beginning of year</b>	<b>41.7</b>	<b>38.6</b>
Purchased and developed software	2.9	4.1
Of which purchases	0.1	0.4
Of which capitalised payroll costs	2.8	3.7
Write-off	-	-1.0
<b>Cost at end of period</b>	<b>44.6</b>	<b>41.7</b>
<b>Amortisation at beginning of year</b>	<b>-12.4</b>	<b>-8.6</b>
Amortisation charge for the period	-5.2	-4.9
Write-off	-	1.0
<b>Amortisation at end of period</b>	<b>-17.6</b>	<b>-12.5</b>
Carrying amount at beginning of year	29.3	30.0
<b>Carrying amount at end of period</b>	<b>27.0</b>	<b>29.2</b>

The Group's intangible assets comprise various software. The purchases and developed software also include the capitalised payroll and payroll-related costs for employees who were directly associated with the Nest development.

**Note 14. Other assets**

At	30 Sep 2024	31 Dec 2023
<b>Financial assets</b>		
Customer receivables and other miscellaneous receivables	0.3	1.0
Collection, recovery and other charges receivable	1.3	0.7
Impairment allowance for other receivables	-0.6	-0.3
<b>Total financial assets</b>	<b>1.0</b>	<b>1.4</b>
<b>Other assets</b>		
Other tax prepayments	-	0.1
Prepayments to suppliers and prepaid expenses	1.0	1.4
<b>Total other assets</b>	<b>1.0</b>	<b>1.5</b>
<b>Total</b>	<b>2.0</b>	<b>2.9</b>

**Note 15. Disposal groups and discontinued operations**

At the end of 2022, the Group began the liquidation of two subsidiaries: Palupera Põllud OÜ and Abja Põld OÜ, and consequently the assets and liabilities of these subsidiaries were classified as held for sale in the consolidated statement of financial position. The subsidiary Abja Põld OÜ was sold in April 2023. Palupera Põllud OÜ had discontinued active operations by the end of 2023 and at the beginning of this year Palupera Põllud OÜ (the acquiree) was merged with the Group's subsidiary OÜ Rütli Property (the acquirer). In segment reporting (see note 3), the operations of the companies were reported in the segment of other activities.

**Note 16. Loans from banks**

	30 Sep 2024	31 Dec 2023
Loans from other credit institutions	8.4	8.9

The term of loans is five years with a final maturity in June 2027. Interest expense for 9 months was 0.4 million euros (9 months 2023: 0.4 million euros), see note 25.

**Note 17. Deposits from customers**

At	30 Sep 2024	31 Dec 2023
<b>Deposits from customers</b>	<b>2,265.8</b>	<b>1,937.4</b>
<b>Deposits by customer type</b>		
Individuals	2,232.2	1,919.6
Legal persons	33.6	17.8
<b>Deposits by currency</b>		
EUR (euro)	2,207.6	1,892.8
SEK (Swedish krona)	38.5	40.1
BGN (Bulgarian lev)	19.7	4.5
<b>Deposits by maturity</b>		
On demand	1,019.3	1,021.6
Maturing within 3 months	272.6	162.1
Maturing between 3 and 12 months	590.8	419.5
Maturing between 1 and 5 years	341.5	296.3
Maturing in over 5 years	41.6	37.9

**Note 18. Subordinated bonds****Changes in bonds**

	2024	2023
Balance at beginning of period	76.1	40.1
<b>Cash items:</b>		
Receipts	11.9	36.2
Payments	-9.7	-5.3
<b>Non-cash items:</b>		
Accrued interest	5.0	5.1
Transaction costs related to issue	0.1	-
<b>Closing balance</b>	<b>83.4</b>	<b>76.1</b>

**Bonds at 30 September 2024**

	Nominal price	Interest rate	Date of issue	Maturity date
Note EE3300002526	10.0	6.5%	30 December 2021	30 December 2031
Note EE3300002583	5.0	7.5%	16 May 2022	16 May 2032
Note EE3300002690	20.0	8.0%	21 September 2022	21 September 2032
Note EE3300003052	15.0	8.0%	16 February 2023	16 February 2033
Note EE3300003151	7.7	10.5%	15 March 2023	Perpetual
Note EE3300003284	3.4	12.0%	31 May 2023	Perpetual
Note EE3300003581	5.1	12.0%	31 August 2023	Perpetual
Note EE3300003706	5.0	8.0%	30 November 2023	30 November 2033
Note EE3300004340	7.0	7.0%	29 May 2024	29 May 2034
Note EE3300004696	5.0	10.5%	21 June 2024	Perpetual

Subject to approval by the Estonian Financial Supervision and Resolution Authority, the bonds can be called early after five years have passed.

**Note 19. Other liabilities**

At	30 Sep 2024	31 Dec 2023
<b>Financial liabilities</b>		
Received surplus payments	1.1	8.4
Supplier payables	0.3	1.3
Lease liabilities	1.8	1.8
<b>Total financial liabilities</b>	<b>3.2</b>	<b>11.5</b>
<b>Other liabilities</b>		
Payables to employees	3.2	3.6
Other taxes payable	1.2	1.4
Provisions	0.1	-
Other payables and deferred income	4.4	1.2
<b>Total other liabilities</b>	<b>8.9</b>	<b>6.2</b>
<b>Total</b>	<b>12.1</b>	<b>17.7</b>

Received surplus payments include surplus repayments of loans by customers that are paid prematurely and not yet matched to particular loan contracts due to uncertainty of nature of these payments.

## Note 20. Other reserves

At	30 Sep 2024	Change	31 Dec 2023
Exchange differences on translating foreign operations	1.1	0.1	1.0
Asset revaluation reserve	1.5	-	1.5
Fair value changes of debt instruments measured at FVOCI	-0.5	0.2	-0.7
<b>Total other reserves</b>	<b>2.1</b>	<b>0.3</b>	<b>1.8</b>

## Note 21. Net currency positions

### Net currency positions at 30 September 2024

	Assets bearing currency risk	Liabilities bearing currency risk	Net position
SEK (Swedish krona)	39.6	38.9	0.7
BGN (Bulgarian lev)	7.9	19.8	-11.9

### Net currency positions at 31 December 2023

	Assets bearing currency risk	Liabilities bearing currency risk	Net position
SEK (Swedish krona)	41.5	40.6	0.9
BGN (Bulgarian lev)	9.6	4.6	5.0

The loans provided by the Group are denominated in the currency of the corresponding region or in euros.

## Note 22. Fair values of assets and liabilities

This note provides an update on the judgements and estimates made by the Group in determining the fair values of the financial instruments since the last annual financial report.

According to management's estimates the fair values of the assets and liabilities reported in the statement of financial position at 30 September 2024 do not differ significantly from their carrying amounts.

The different levels have been defined as follows:

- *Level 1*: Quoted prices (unadjusted) in active markets for identical instruments.
- *Level 2*: Inputs other than quoted prices included within level 1 that are observable for instruments, either directly (that is, as prices) or indirectly (that is, derived from prices). This category includes instruments valued using quoted market prices in active markets for similar instruments, quoted prices for identical or similar instruments in markets that are considered less than active, or other valuation techniques in which all significant inputs are directly or indirectly observable from market data.
- *Level 3*: Inputs that are not based on observable market data (that is, unobservable inputs). This category includes all instruments for which the valuation technique includes inputs that are not observable and the unobservable inputs have a significant effect on the instrument's valuation. This category includes instruments that are valued based on quoted prices for similar instruments for which significant unobservable adjustments or assumptions are required to reflect differences between the instruments.

## Fair value hierarchy at 30 September 2024

	Level 1	Level 2	Level 3	Total
<b>Assets measured at fair value</b>				
Debt instruments at FVOCI (note 5)	15.0	-	-	15.0
Loans to customers at FVTPL (note 6-10)	-	-	54.7	54.7
Land and buildings (note 11)	-	-	6.1	6.1
Investment properties (note 12)	-	-	48.7	48.7
<b>Assets for which fair values are disclosed</b>				
Loans to customers at amortised cost (note 6-10)	-	-	2,004.9	2,004.9
Other financial receivables (note 14)	-	-	1.0	1.0
<b>Total assets</b>	<b>15.0</b>	<b>-</b>	<b>2,115.4</b>	<b>2,130.4</b>
<b>Liabilities for which fair values are disclosed</b>				
Loans from banks (note 16)	-	-	8.4	8.4
Deposits from customers (note 17)	-	-	2,265.8	2,265.8
Subordinated bonds (note 18)	-	46.9	36.5	83.4
Lease liabilities (note 19)	-	-	1.8	1.8
Other financial liabilities (note 19)	-	-	1.4	1.4
<b>Total liabilities</b>	<b>-</b>	<b>46.9</b>	<b>2,313.9</b>	<b>2,360.8</b>

## Fair value hierarchy at 31 December 2023, restated

	Level 1	Level 2	Level 3	Total
<b>Assets measured at fair value</b>				
Debt instruments at FVOCI (note 5)	15.4	-	-	15.4
Loans to customers at FVTPL (note 6-10)	-	-	57.9	57.9
Land and buildings (note 11)	-	-	6.3	6.3
Investment properties (note 12)	-	-	49.1	49.1
<b>Assets for which fair values are disclosed</b>				
Loans to customers at amortised cost (note 6-10)	-	-	1,604.1	1,604.1
Other financial receivables (note 14)	-	-	1.4	1.4
<b>Total assets</b>	<b>15.4</b>	<b>-</b>	<b>1,718.8</b>	<b>1,734.2</b>
<b>Liabilities for which fair values are disclosed</b>				
Loans from banks (note 16)	-	-	8.9	8.9
Deposits from customers (note 17)	-	-	1,937.4	1,937.4
Subordinated bonds (note 18)	-	34.9	41.2	76.1
Lease liabilities (note 19)	-	-	1.8	1.8
Other financial liabilities (note 19)	-	-	9.7	9.7
<b>Total liabilities</b>	<b>-</b>	<b>34.9</b>	<b>1,999.0</b>	<b>2,033.9</b>

There were no movements between levels 1 and 2 in 2024 and 2023.

The level 1 debt instruments at FVOCI comprise bonds whose fair values have been measured by reference to quoted bid prices in active markets at the reporting date. Bloomberg has been used as the price source. All bonds are actively traded and have quoted prices in an active market. The fair value of bonds nominated in currencies other than the euro also reflects the current spot rate of the respective currencies at the reporting date.

Subordinated bonds publicly traded on the Nasdaq Tallinn stock exchange, which are accounted for as level 2 instruments, are measured at market value at the reporting date, i.e. at the value of the last transaction of the trading date.

Subordinated bonds which are not publicly traded are classified as level 3 instruments and measured in the statement of financial position at amortised cost using the effective interest method. Their fair value is determined using a valuation technique whereby the present value of an instrument is found by discounting all expected future cash flows by applying the current market interest rate, which at the reporting date was 5.35% (31 December 2023: 5.55%).

The level 3 loans to customers at FVTPL in the amount of 54.7 million euros are loans with the features of a hybrid instrument, which comprise the principal and interest receivables of the host contract and a growth component (increase in fair value) resulting from the revaluation of the underlying asset. The Group measures the fair value of loans to customers measured at FVTPL using a valuation technique, whereby the present value of an instrument is calculated by discounting all expected future cash flows at prevailing market interest rates. The interest rates are determined based on a model that uses as inputs both market data on instruments with similar currency, maturity, interest rate, credit risk and other characteristics and the Group's internal data.

In line with IFRS 13 and IFRS 9, the fair value of an instrument at initial recognition normally equals the transaction price. For new transactions, where the valuation technique used for fair value measurement requires significant inputs that are not based on observable market data, the financial instrument is initially recognised at the transaction price. If the transaction price differs from the fair value obtained using the valuation technique, the difference is recognised in the statement of financial position within *Loans to customers* as deferred day 1 gain or loss, which is subsequently amortised through profit or loss on a straight-line basis over the term of the contract. Balance of deferred day 1 gain at end of year was 1.9 million euros (31 December 2023: 4.6 million euros).

At the reporting date, the market interest rate applied in the valuation technique was 5.35% (31 December 2023: 5.55%). Gains on the revaluation of the underlying assets are included in the future cash flows of the instrument. The market comparison method was used for the valuation of the underlying assets, similarly to the valuation of agricultural land.

The change in the revaluation of loans to customers (value adjustments due to changes in factors, including time, gains from the revaluation of loans with investment risk) is recognised as a gain or loss on financial assets at FVTPL. These are assets that are required to be categorised as measured at FVTPL.

The level 3 loans to customers at amortised cost that amount to 2,004.9 million euros are measured at amortised cost using the effective interest method less any loss allowances. For fair valuation, the estimated cash-flows have been discounted at the prevailing market interest rates, the result being not materially different from that recognised under the amortised cost method using the effective interest rate.

The level 3 land and buildings that amount to 6.1 million euros consists of real estate used by the Group as office premises in Tallinn and agricultural land.

The office premises in Tallinn were valued using the income approach and the following inputs: the estimated rental income per square metre per month for commercial space in Tallinn is 12 euros, the rental growth rate is 2.0%, the long-term vacancy rate is 5% and the discount rate is 9.5%. Part of the office premises have been rebuilt from residential space and they were valued using the market comparison approach, whereby the valuation was based on the prices per square metre of residential space in Tallinn city centre of 4,001-4,446 euros less the costs of transforming the office space back into apartments.

The agricultural land's fair value is based on a valuer's appraisal according to which the average price per hectare of agricultural land at the date of valuation was 8,000 euros.

The level 3 investment properties that amount to 48.7 million euros consist of office buildings and retail space in Tartu, Tallinn and Pärnu, forest and agricultural land leased to farmers. Investment properties are measured at the fair value in the financial statements.

The office building in Tartu was valued using the residual method based on the highest and best use of the property. The residual method takes into account the profit that could be earned if the existing property were developed and sold as an apartment building. The following inputs were used in the valuation of the

property: the sales price per square metre for flats in Tartu old town of 4,200 euros and development costs per square metre of 1,734 euros.

The fair values of other office buildings in Tallinn and Pärnu were estimated using the income approach based on rental prices of 10-14 euros per square metre in Tallinn and 4-12 euros per square metre in Pärnu.

Agricultural land was valued using mainly the market comparison approach. Based on the opinion of a valuation expert, the best use of the land is the existing use for agricultural purposes and the average price per hectare of agricultural land is 8,000 euros.

Valuations of investment property are performed at each reporting date to make sure that the assets are measured at fair value at the reporting date.

The office premises recognised in the line item 'Land and buildings' and the forest and agricultural land and office buildings and retail space recognised in the line item 'Investment property' have not been remeasured during the reporting period as management estimates that the carrying amounts of these assets correspond to their fair values. The assumptions used described above are based on experts estimates obtained in the fourth quarter of 2023.

### Note 23. Contingent liabilities

At 30 September 2024, the unused portions of the credit lines and loans totalled 171.1 million euros (31 December 2023: 134.9 million euros).

### Note 24. Interest income

	Q3 2024	Q3 2023	9M 2024	9M 2023
Interest income on loans to customers at amortised cost	42.1	35.0	118.4	94.8
Interest income on debt instruments	-	0.1	0.1	0.2
Interest income on banks and central banks deposits	4.8	3.0	16.0	5.9
<b>Total interest income</b>	<b>46.9</b>	<b>38.1</b>	<b>134.5</b>	<b>100.9</b>

### Note 25. Interest expense

	Q3 2024	Q3 2023	9M 2024	9M 2023
Interest expense on deposits	17.2	10.5	49.8	24.1
Interest expense on liabilities to banks	0.1	0.1	0.4	0.4
Interest expense on bonds	1.9	1.4	5.2	3.6
<b>Total interest expense</b>	<b>19.2</b>	<b>12.0</b>	<b>55.4</b>	<b>28.1</b>

### Note 26. Other operating income

	Q3 2024	Q3 2023	9M 2024	9M 2023
Rental income	0.8	0.8	2.6	0.5
Income from debt recovery proceedings	0.3	0.2	0.8	2.6
Miscellaneous income	0.1	0.2	0.3	0.3
<b>Total other income</b>	<b>1.2</b>	<b>1.2</b>	<b>3.7</b>	<b>3.4</b>

**Note 27. Other operating expenses**

	Q3 2024	Q3 2023	9M 2024	9M 2023
Legal regulation charges	1.2	1.2	3.4	2.3
Expenses from investment properties	0.2	0.3	1.0	1.1
Expenses related to registry inquiries	0.1	0.1	0.4	0.4
Expenses related to enforcement proceedings	0.2	0.2	0.6	0.4
Miscellaneous expenses	0.5	0.4	1.1	0.9
<b>Total other expenses</b>	<b>2.2</b>	<b>2.2</b>	<b>6.5</b>	<b>5.1</b>

**Note 28. Administrative expenses**

	Q3 2024	Q3 2023	9M 2024	9M 2023
Marketing expenses	1.1	2.0	3.8	6.3
Short-term leases	-	-	0.1	0.1
Office and other similar administrative expenses	0.2	0.2	0.4	0.6
Other personnel-related expenses	0.5	0.4	1.1	1.0
Software licensing and other information technology costs	0.5	0.4	1.5	1.2
Other services	0.3	0.5	0.9	0.9
Postal supplies and charges	-	-	0.1	0.1
Telephone and other communications expenses	0.2	0.3	0.7	0.7
Miscellaneous operating expenses	-	0.1	0.2	0.2
<b>Total administrative expenses</b>	<b>2.8</b>	<b>3.9</b>	<b>8.8</b>	<b>11.1</b>

**Note 29. Earnings per share**

	9M 2024	9M 2023
Profit from continuing operations (EUR million)	27.6	30.0
Profit from discontinued operations (EUR million)	-	-0.6
<b>Net profit for the period (EUR million)</b>	<b>27.6</b>	<b>29.4</b>
Number of shares at beginning of year	80,000	80,000
Number of shares at end of period	80,000	80,000
Weighted average number of ordinary shares outstanding	80,000	80,000
<b>Earnings per share, in euros</b>	<b>345</b>	<b>367</b>

At 31 December 2023 and at 30 September 2024 the Group did not have any potential dilutive ordinary shares. Therefore, diluted earnings per share equal basic earnings per share.

**Note 30. Related parties**

For the purposes of these financial statements, parties are related if one controls the other or exerts significant influence on the other's business decisions. Related parties include:

- shareholders of Bigbank AS;
- members of Group companies' management and supervisory boards;
- close family members of the above;
- companies connected with the above persons, except where the persons cannot exert significant influence on the company's business decisions.

At 30 September 2024, the Group had a claim to related parties of 10.9 million euros (Loans to customer) (31 December 2023: 10.4 million euros), the interest income on that claim amounted to 0.6 million euros for



nine months of 2024 (for nine months of 2023: 0.4 million euros). Loans granted to related parties are issued at market conditions.

At the reporting date, management and supervisory board members and parties related to them held 3,397 Bigbank bonds with a total nominal value of 3.4 million euros (31 December 2023: 748 thousand euros). The interest expense on bonds to related parties amounted to 133 thousand euros for nine months of 2024 (for nine months of 2023: 30 thousand euros).

### Claim to related parties

At	30 Sep 2024	31 Dec 2023
Loans to customers	<b>10.9</b>	<b>8.1</b>
Of which to members of management and supervisory boards and share holders	1.8	1.8
Of which to companies and persons connected related parties	9.1	6.3
Subordinated bonds	<b>3.4</b>	<b>0.7</b>
Of which to members of management and supervisory boards	1.1	0.7
Of which to companies and persons connected related parties	2.3	-
Deposits from customers	<b>0.2</b>	-
Of which to members of management and supervisory boards	0.1	-
Of which to companies and persons connected related parties	0.1	-

The Group finances subsidiaries and branches with long-term loans. Such loans are eliminated from the consolidated financial statements.

# Statement by the Management Board

According to the knowledge and belief of the Management Board of Bigbank AS, at the date of publication:

- The figures and additional information presented in the condensed consolidated interim report for the period ended 30 September 2024 are true and complete.
- The condensed consolidated interim financial statements provide a true and fair view of the Group's financial position, financial performance and cash flows.
- The condensed consolidated interim report at 30 September 2024 has been prepared in accordance with the international financial reporting standard IAS 34 *Interim Financial Reporting* as adopted by the European Union and with the information disclosure requirements established by the Bank of Estonia.

The financial statements have been prepared on a going concern basis.

**Martin Lääts**

Chairman of the  
Management Board

**Mart Veskimägi**

Member of the  
Management Board

**Argo Kiltsmann**

Member of the  
Management Board

**Ingo Pöder**

Member of the  
Management Board

**Ken Kanarik**

Member of the  
Management Board

signed digitally on 24 October 2024