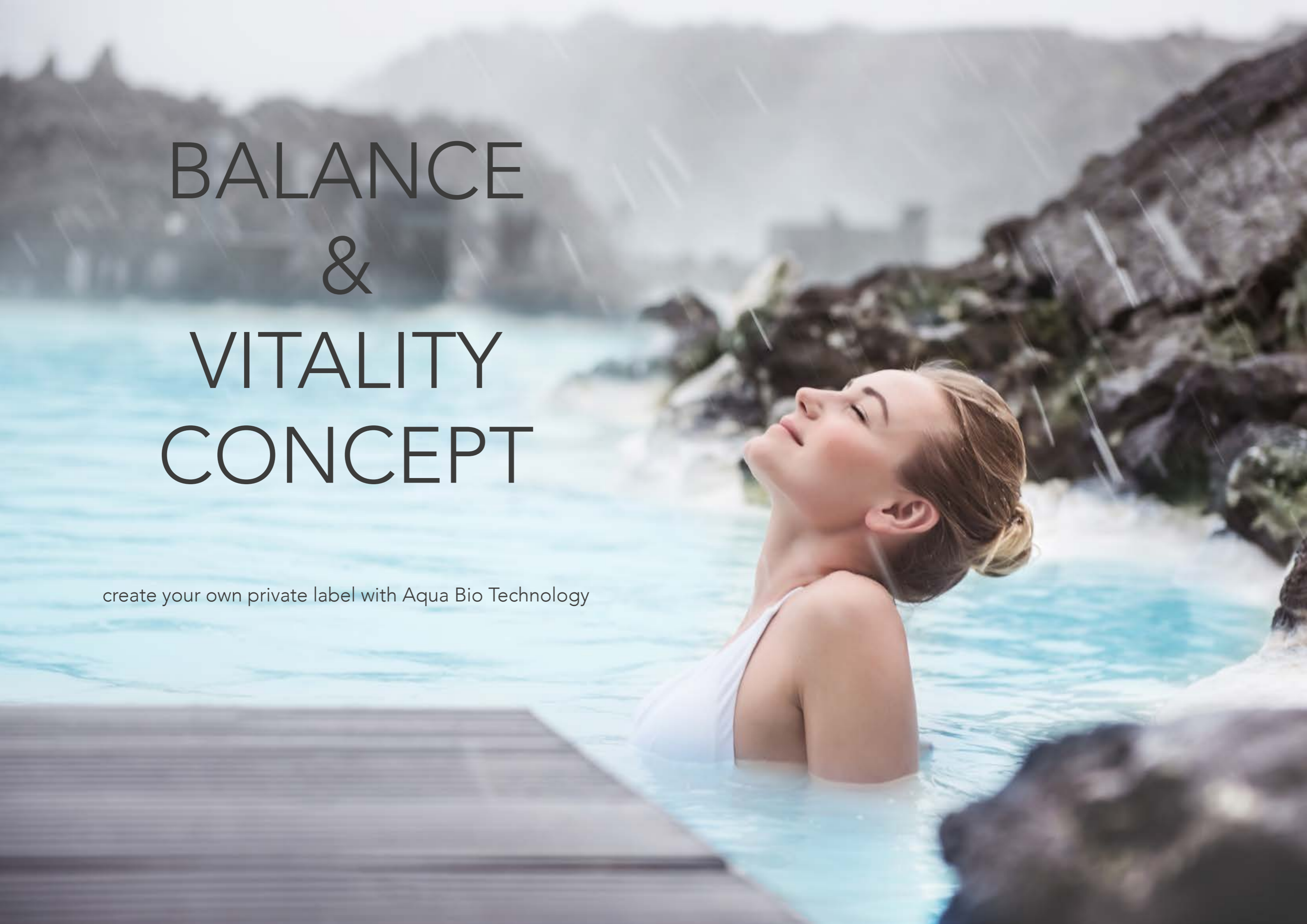


BALANCE & VITALITY CONCEPT

create your own private label with Aqua Bio Technology



Balance & Vitality Concept

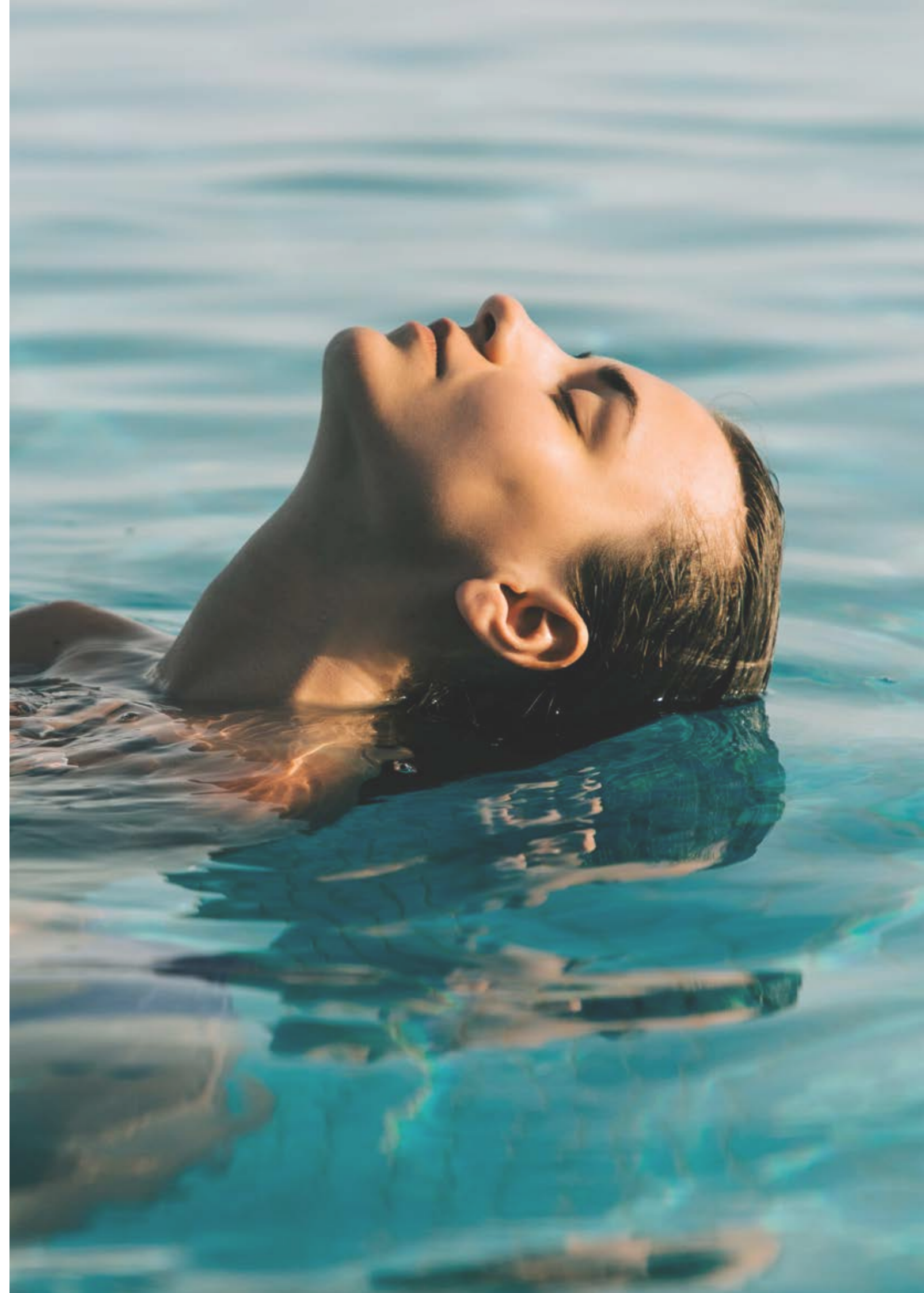
CREATE YOUR OWN PRIVATE LABEL

Our concept is derived from one basic principle:
to offer products that react gently and harmoniously with the skin
to restore its natural balance;
targeted skincare that guarantees results,
and truly innovative products that
preserve or restore well-being and beauty.

We can currently offer 27 products for your private label.

TARGETED PRODUCT INGREDIENT EFFECTS

Strong anti-oxidants, brightening effects, soothing
and calming, contributing to improvement of microcirculation,
the unique benefits of beta-glucans as well as
anti-ageing effects resulting in an improvement of the
appearance of fine lines, wrinkles, elasticity, skin tone,
skin texture, discoloration, and pore size.



HIGH QUALITY AND NATURAL PRODUCTS

CLEANSERS

Equalizing lotion cleanser	7
Purifying gel cleanser	8
Facial lotion cleanser	9
Body gel cleanser	10
Light exfoliating gel cleanser	11
Intensive exfoliating gel cleanser	12

TONERS & MISTS

Equalizing gel toner	14
Phyto marine tonifying mist	15

FACIAL MASKS

Ultra-moisturizing mask	17
Bio-peeling mask	18
Ultra-purifying mask	19

TREATMENT CREAMS

Daily protective cream	21
Bio fortifying anti-ageing cream	22
Nourishing massage cream	23
Sculpturing massage cream	24

CONCENTRATE TREATMENTS

Essential triple action eye cream	26
Anti-ageing lift serum	27
Anti-acne moisture mattifying cream	28
Restorative serum	29
Breast lift serum	30
Sculpturing body serum	31
Hydra soothing body serum	32

SPECIFIC TREATMENTS

Sculpturing body treatment	34
Nutrient rich aromatic treatment	35
Thermal mud treatment	36
Skincare and massage dry oil	37
Skincare and massage oil	38

HIGH QUALITY AND NATURAL INGREDIENTS



aloe vera



horse chestnut



rosewood oil



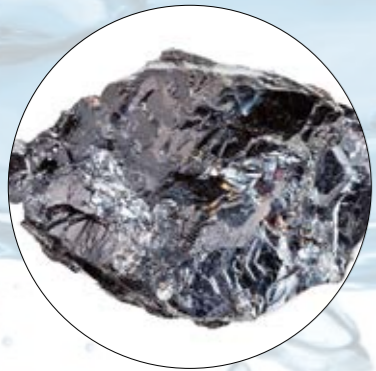
geranium oil



allantoin



sea water



zink PCA



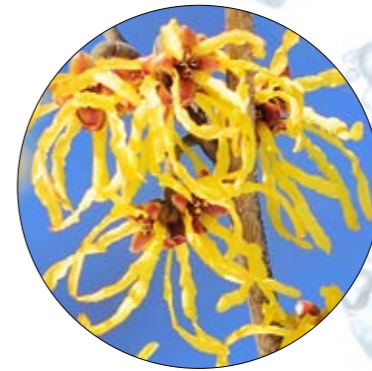
lemon grass oil



ginseng extract



lavender oil



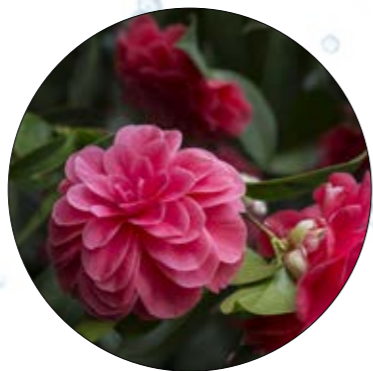
witch hazel water



shea butter



manganese
gluconate



camellia seed
oil



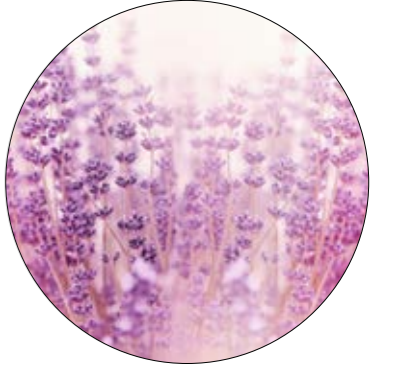
walnut shell
particles



rosehip seed
oil



anemarrhenas
asphodeloides
root extract



lavender flower
water

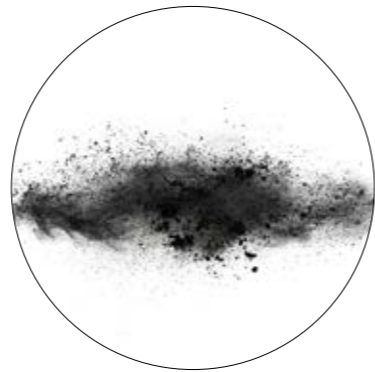
HIGH QUALITY AND NATURAL INGREDIENTS



palmarosa



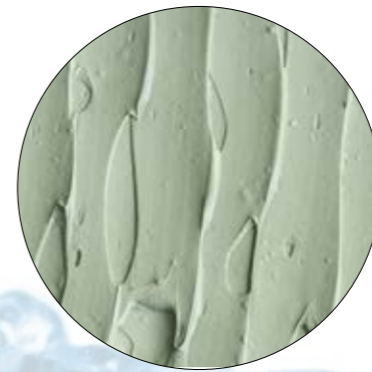
beta-glucan



black silt



glycolic acid



Manicouagan clay



bentonite



cypress oil



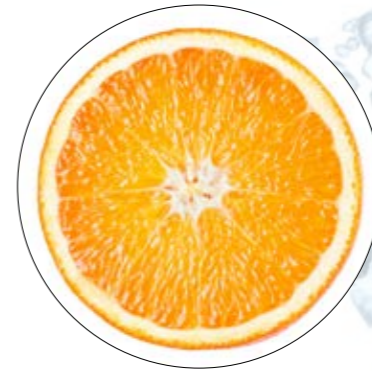
soft luffa particles



grape seed oil



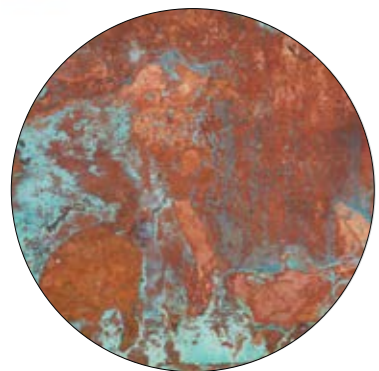
caffeine



vitamin c



bisabolol



chlorophyllin
copper complex



rosemary
oil



peppermint
oil



olive leaf
extract



panthenol



alaria esculenta
extract



kaolin

CLEANSERS

Cleansing is the first step of any solid skin-care routine, so it's important to find a cleanser that suits your skin. We offer 6 cleansers and exfoliators that will cover all skin types, leaving the skin feeling immaculately clean, nourished, and ready for whatever's next.



Equalizing lotion cleanser

For delicate, dry and devitalized skin. Featuring aloe vera, horse chestnut extract, manganese gluconate, rosewood and geranium essential oils providing hydration and soothing to delicate, dry, and devitalized skin.

USE:

Use a coin-sized amount of **cleanser**, work between your already clean hands and apply to face. Massage into your skin, including your neck. Rinse with lukewarm water and pat dry.

INCI:

Aqua, Aloe Barbadensis (Aloe Vera) Leaf Juice, Caprylic/Capric Triglyceride, Propanediol, Glycerin, Cetyl Alcohol, Allantoin, Panthenol, Horse Chestnut (Aesculus Hippocastanum) Extract, Manganese Gluconate, Aniba Rosaeodora (Rosewood) Wood Oil, Pelargonium Graveolens (Geranium) Oil, Polyglyceryl-6 Caprylate, Polyglyceryl-3 Cocoate, Polyglyceryl-4 Caprate, Polyglyceryl-6 Ricinoleate, Acrylates/C10-30 Alkyl Acrylate Crosspolymer, Phenoxyethanol, Tetrasodium Iminodisuccinate, Sodium Hydroxyde.

KEY INGREDIENTS



Purifying gel cleanser

For absorption of excess oil for combination, oily and acne-prone skin. Featuring aloe vera, sea water, zinc PCA, allantoin, panthenol, ginseng extract, lemongrass and lavender essential oils providing absorption of excess oil and giving a matte finish to combination, oily or acne-prone skin.

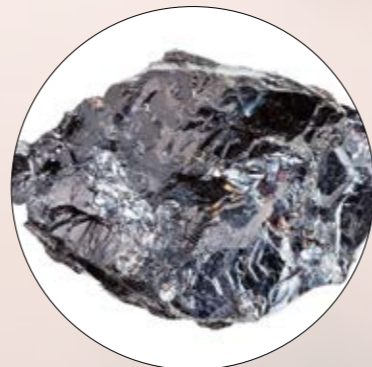
USE:

Use a coin-sized amount of **cleanser**, work between your already clean hands and apply to face. Massage into your skin, including your neck. Rinse with lukewarm water and pat dry.

INCI:

Aqua, Sodium C14-16 Olefin Sulfonate, Aloe Barbadensis (Aloe Vera) Leaf Juice, Cetyl Betaine, Disodium Cocoamphodiacetate, Glycerin, Sea Water, Zinc PCA, Allantoin, Panthenol, Ginseng (Panax Ginseng) Extract, Cymbopogon Flexuosus (Lemongrass) Oil, Lavandula Angustifolia (Lavender) Oil, Sodium Chloride, Phenoxyethanol, Tetrasodium Iminodisuccinate, Citric Acid.

KEY INGREDIENTS



Facial lotion cleanser

For all skin types. Featuring aloe vera, witch hazel water, shea butter, glycolic acid, allantoin, panthenol and camellia seed oil providing exfoliation, cellular regeneration and tighten dilated pores.

USE:

Use a coin-sized amount of **cleanser**, work between your already clean hands and apply to face. Massage into your skin, including your neck and leave on for 5 to 10 minutes. Rinse with lukewarm water and pat dry.

INCI:

Aqua, Aloe Barbadensis (Aloe Vera) Leaf Juice, Sodium C14-16 Olefin Sulfonate, Glyceryl Stearate SE, Glycerin, Hamamelis Virginiana (Witch Hazel) Water, Butyrospermum Parkii (Shea Butter), Glycolic Acid, Allantoin, Panthenol, Lavandula Angustifolia (Lavender) Oil, Camellia Oleifera (Camellia) Seed Oil, Tocopheryl Acetate, Hydroxyethylcellulose, Cetyl Alcohol, Xanthan Gum, Polyglyceryl-3 Cocoate, Polyglyceryl-4 Caprate, Polyglyceryl-6 Caprylate, Polyglyceryl-6 Ricinoleate, Phenoxyethanol, Tetrasodium Iminodisuccinate, Citric Acid, Sodium Hydroxyde.

KEY INGREDIENTS



Body gel cleanser

For all skin types. Featuring clean, natural, and biodegradable surfactants, glycerin, lemongrass and lavender essential oils providing a deep and gentle wash without irritation.

INCI:

Aqua, Sodium C14-16 Olefin Sulfonate, Cetyl Betaine, Disodium Cocoamphodiacetate, Glycerin, Cymbopogon Flexuosus (Lemongrass) Oil, Lavandula Angustifolia (Lavender) Oil, Sodium Chloride, Phenoxyethanol, Tetrasodium Iminodisuccinate, Citric Acid.

USE:

Use a good amount of **cleanser**, work between your hands and apply to body and face. Massage into your skin. Rinse with lukewarm water.

KEY INGREDIENTS



Light exfoliating gel cleanser

For all skin types. Featuring aloe vera, soft luffa particles, allantoin, panthenol, horse chestnut extract, chlorophyllin-copper complex, camellia seed oil with rosewood and geranium essential oils providing skin oxygenation to smooth and tone skin texture.

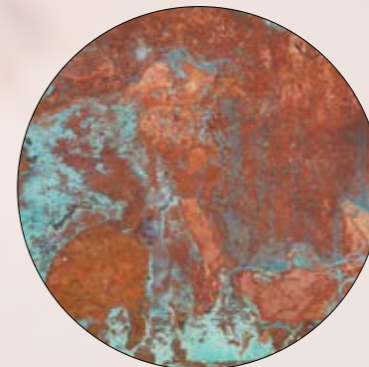
USE:

Use a coin-sized amount of **exfoliator**, work between your already clean hands and apply to face. Massage into your skin, including your neck avoiding eye area. Rinse with lukewarm water and pat dry.

INCI:

Aqua, Aloe Barbadensis (Aloe Vera) Leaf Juice, Cocamidopropyl Betaine, Glycerin, Luffa Cylindrica, Allantoin, Panthenol, Aesculus Hippocastanum (Horse Chestnut) Extract, Aniba Rosaeodora (Rosewood) Wood Oil, Pelargonium Graveolens (Geranium) Oil, Chlorophyllin-Copper Complex, Acrylates/C10-C30 Alkyl Acrylate Cross Polymer, Polyglyceryl-6 Caprylate, Polyglyceryl-3 Cocoate, Polyglyceryl-4 Caprate, Polyglyceryl-6 Ricinoleate, Phenoxyethanol, Tetrasodium Iminodisuccinate, Sodium Hydroxyde.

KEY INGREDIENTS



Intensive exfoliating gel cleanser

For all skin types. Featuring aloe vera, walnut shell particles, allantoin, panthenol, horse chestnut extract with lavender and rosemary essential oils providing a boost to microcirculation and cell renewal, smoothing skin roughness and enhancing the effectiveness of in cabin treatments.

USE:

Use a coin-sized amount of **exfoliator**, work between your already clean hands and apply to face. Massage into your skin, including your neck avoiding eye area. Rinse with lukewarm water and pat dry.

INCI:

Aqua, Aloe Barbadensis (Aloe Vera) Leaf Juice, Cocamidopropyl Betaine, Walnut (Juglans Regia) Shell Powder, Glycerin, Allantoin, Panthenol, Horse Chestnut (Aesculus Hippocastanum) Extract, Lavandula Angustifolia (Lavender) Oil, Rosmarinus Officinalis (Rosemary) Leaf Oil, Acrylates/C10-C30 Alkyl Acrylate Cross Polymer, Polyglyceryl-6 Caprylate, Polyglyceryl-3 Cocoate, Polyglyceryl-4 Caprate, Polyglyceryl-6 Ricinoleate, Phenoxyethanol, Tetrasodium Iminodisuccinate, Sodium Hydroxyde.

KEY INGREDIENTS



TONERS & MISTS

Whether you're looking to calm irritated skin, brighten a dull, dry complexion, or simply boost your mood, we've got you covered with the best face toners and mists that'll uplift and refresh your skin.



Equalizing gel toner

For all skin types. Best suited for in cabin treatments. Featuring aloe vera, olive leaf extract, manganese gluconate, allantoin, panthenol, chlorophyllin-copper complex with rosewood and geranium essential oils providing an ideal follow-up to cleansing by rebalancing and stimulating skin functions without altering normal pH, perfect and easy use for in cabin treatments.

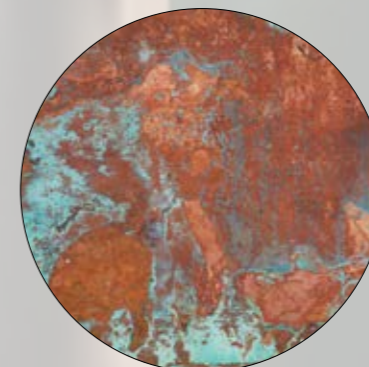
USE:

Use a small sized amount of **toner**, work between your already clean hands and apply to face. Massage into your skin, including your neck before applying serums and or creams.

INCI:

Aqua, Propanediol, Aloe Barbadensis (Aloe Vera) Leaf Juice, Olive (Olea Europaea) Leaf Extract, Allantoin, Panthenol, Manganese Gluconate, Glycerin, Sea Water, Chlorophyllin-Copper Complex, Aniba Rosaeodora (Rosewood) Wood Oil, Pelargonium Graveolens (Geranium) Oil, Acrylates/C10-C30 Alkyl Acrylate Cross Polymer, Polyglyceryl-6 Caprylate, Polyglyceryl-3 Cocoate, Polyglyceryl-4 Caprate, Polyglyceryl-6 Ricinoleate, Phenoxyethanol, Tetrasodium Iminodisuccinate, Sodium Hydroxyde.

KEY INGREDIENTS



Phyto marine tonifying mist

For all skin types. Featuring aloe vera, lavender flower water, sea water, trehalose, caffeine with low and high molecular weight hyaluronic acids providing a boost to micro-circulation, hydration and preventing skin ageing.

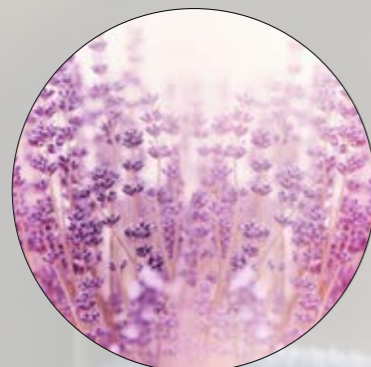
USE:

Spray the facial **mist** onto clean skin morning and night before applying serums and or creams and as needed during the day to hydrate and freshen your skin as often as needed.

INCI:

Aqua, Aloe Barbadensis (Aloe Vera) Leaf Juice, Lavandula Angustifolia (Lavender) Flower Water, Glycerin, Sea Water, Trehalose, Allantoin, Caffeine, Hydrolyzed Sodium Hyaluronate, Sodium Hyaluronate, Phenoxyethanol, Tetrasodium Iminodisuccinate, Citric Acid.

KEY INGREDIENTS



FACIAL MASKS

Face masks are the foundation of any luxurious skin care routine. No matter how tired, stressed, broken-out, or parched your skin may be, our face masks are out there to help you.



Ultra-moisturizing mask

For all skin types. Featuring aloe vera, shea butter, vitamin C, panthenol, retinyl palmitate, camellia seed oil, rosehip seed oil with rosewood and lavender essential oils providing prevention of premature ageing of the skin, reduce epidermal stress, revitalize, moisturize and soften the skin.

USE:

Use a good amount of **mask**, work between your already clean hands and apply to face. Apply a thick layer into your skin, including your neck and leave on for 20 minutes. Rinse with lukewarm water and pat dry. Follow with serums and creams.

INCI:

Aqua, Aloe Barbadensis (Aloe Vera) Leaf Juice, Cetyl Alcohol, Glyceryl Stearate SE, Caprylic/Capric Triglyceride, Propanediol, Stearic Acid, Butyrospermum Parkii (Shea) Butter, Glycerin, 3-O-Ethyl Ascorbic Acid, Retinyl Palmitate, Allantoin, Panthenol, Camellia Oleifera (Camellia) Seed Oil, Rosa Canina (Rosehip) Seed Oil, Aniba Rosaeodora (Rosewood) Wood Oil, Lavandula Angustifolia (Lavender) Oil, Myristyl Myristate, Tocopheryl Acetate, Phenoxyethanol, Tetrasodium Iminodisuccinate, Sodium Hydroxide.

KEY INGREDIENTS



Bio-peeling mask

For all skin type for intensive treatments. Featuring kaolin, glycolic acid, salicylic acid, bisabolol, shea butter and lavender essential oil providing progressive exfoliating action, allowing faster turnover of the cells for more oxygenated, cleaner, smoother, softer, and younger looking skin.

USE:

Use a good amount of **mask**, work between your already clean hands and apply to face avoiding eye area. Apply a thick layer into your skin, including your neck and leave on for 20 minutes. Rinse with lukewarm water and pat dry. Follow with serum and cream.

INCI:

Aqua, Caprylic/Capric Triglyceride, Cetyl Alcohol, Glycerin, Glycolic Acid, Stearic Acid, Kaolin, Polyglyceryl-6 Stearate, Polyglyceryl-6 Behenate, Salicylic Acid, Sodium Hydroxyde, Bisabolol, Allantoin, Butyrospermum Parkii (Shea Butter), Lavandula Angustifolia (Lavender) Oil, Hydroxyethylcellulose, Phenoxyethanol, Tetrasodium Iminodisuccinate.

KEY INGREDIENTS



Ultra-purifying mask

For combination, oily or acne-prone skin. Featuring kaolin, glycolic acid, bentonite, shea butter, chlorophyllin-copper complex, horse chestnut extract, ginseng extract, olive leaf extract with palmarosa, lavender and peppermint essential oils providing a deep detoxification of the skin while being antiseptic, anti-bacterial and astringent for combination, oily or acne-prone skin.

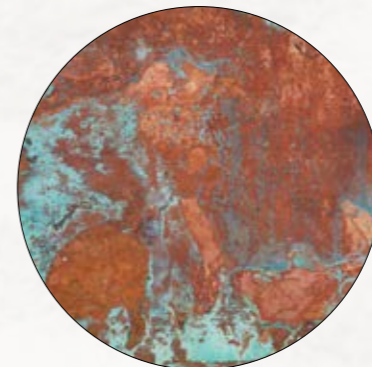
USE:

Use a good amount of **mask**, work between your already clean hands and apply to face avoiding eye area. Apply a thick layer into your skin, including your neck and leave on for 20 minutes. Rinse with lukewarm water and pat dry. Follow with serum and cream.

INCI:

Aqua, Kaolin, Glycerin, Caprylic/Capric Triglyceride, Glycolic Acid, Bentonite, Cetyl Alcohol, Stearic Acid, Sodium Hydroxyde, Polyglyceryl-6 Stearate, Polyglyceryl-6 Behenate, Butyrospermum Parkii (Shea Butter), Chlorophyllin-Copper Complex, Aesculus Hippocastanum (Horse Chestnut) Extract, Ginseng (Panax Ginseng) Extract, Olive (Olea Europaea) Leaf Extract, Cymbopogon martini (Palmarosa) Essential Oil, Lavandula Angustifolia (Lavender) Oil, Mentha Piperita (Peppermint) Leaf Oil, Xanthan Gum, Hydroxyethylcellulose, Phenoxyethanol.

KEY INGREDIENTS



TREATMENT CREAMS

Choosing a formula for your skin type with the right cocktail of ingredients is the best way to maximize the benefits of moisturizing your face. We provide you with four excellent options for different skin types.



Daily protective cream

For all skin types. Featuring UV filters, aloe vera, allantoin, panthenol, hyaluronic acid, shea butter, camellia seed oil, rosehip seed oil with lavender essential oil providing UV protection, replenishing the hydro-lipidic barrier and reducing the dehydration process by leaving the skin well nourished without oily feeling.

USE:

Apply a small size amount of **day cream** on perfectly clean skin. Work between your already clean hands and apply to face in circular motion and to the neck in upward motion for better sun protection.

INCI:

Aqua, Aloe Barbadensis (Aloe Vera) Leaf Juice, Caprylic/Capric Triglyceride, Glyceryl Stearate SE, Propanediol, Octocrylene, Butyl Methoxydibenzoylmethane, Ethylhexyl Methoxycinnamate, Glycerin, Stearic Acid, Cetyl Alcohol, Myristyl Myristate, Allantoin, Panthenol, Sodium Hyaluronate, Tocopheryl Acetate, Butyrospermum Parkii (Shea Butter), Camellia oleifera (Camellia) Seed Oil, Rosa Canina (Rosehip) Seed Oil, Lavandula Angustifolia (Lavender) Oil, Phenoxyethanol, Tetrasodium Iminodisuccinate, Citric Acid.

KEY INGREDIENTS



Bio fortifying anti-ageing cream

For all skin types. Featuring aloe vera, shea butter, peptide ingredient complex, alaria esculenta extract, allantoin, panthenol, hyaluronic acid, camellia seed oil, rosehip seed oil with rosewood and geranium essential oils providing anti-ageing moisture, preventing the consequences of skin ageing while diminishing fine lines and wrinkles.

INCI:

Aqua, Aloe Barbadensis (Aloe Vera) Leaf Juice, Acetyl Hexapeptide-8, Glyceryl Stearate SE, Propanediol, Glycerin, Coco-Caprylate/Caprates, Pentapeptide-18, Butyrospermum Parkii (Shea Butter), Cetyl Alcohol, Myristyl Myristate, Stearic Acid, Caprylic/Capric Triglyceride, Sodium Hyaluronate, Alaria Esculenta Extract, Camellia Oleifera (Camellia) Seed Oil, Rosa Canina (Rosehip) Seed Oil, Allantoin, Panthenol, Tocopherol, Aniba Rosaeodora (Rosewood) Wood Oil, Lavandula Angustifolia (Lavender) Oil, Pelargonium Graveolens (Geranium) Oil, Phenoxyethanol, Tetrasodium Iminodisuccinate, Sodium Hydroxide.

USE:

Apply a small size amount of **cream** on perfectly clean skin. Work between your already clean hands and apply to face in circular motion and to the neck in upward motion. The perfect **cream** for day and night.

KEY INGREDIENTS



Nourishing massage cream

For all skin types, for face and body. Featuring aloe vera, shea butter, camellia seed oil, rosehip seed oil, allantoin, panthenol with rosewood and geranium essential oils providing help to counter the effects of aging, moisturize, protect and enhance skin well-being, ideal for massages.

USE:

Apply a good amount of **massage cream** on perfectly clean skin. Work between your already clean hands to warm up the **massage cream** and apply to the body in circular motion. Perfect for massages, after sun care and maintaining a youthful body glow.

INCI:

Aqua, Aloe Barbadensis (Aloe Vera) Leaf Juice, Caprylic/Capric Triglyceride, Coco-Caprylate/Caprate, Glyceryl Stearate SE, Propanediol, Stearic Acid, Cetyl Alcohol, Glycerin, Myristyl Myristate, Butyrospermum Parkii (Shea Butter), Camellia Oleifera (Camellia) Seed Oil, Rosa Canina (Rosehip) Seed Oil, Allantoin, Panthenol, Tocopheryl Acetate, Aniba Rosaeodora (Rosewood) Wood Oil, Pelargonium Graveolens (Geranium) Oil, Phenoxyethanol, Tetrasodium Iminodisuccinate, Citric Acid.

KEY INGREDIENTS



Sculpturing massage cream

For all skin types, for face and body. Featuring aloe vera, caffeine, allantoin, panthenol, horse chestnut extract, shea butter, camellia seed oil with cypress, lavender, geranium, rosemary and rosewood essential oils providing specific care of varicose veins, stretch marks, unsightly legs and cellulite, ideal for sculpturing and slenderizing massages.

USE:

Apply a good amount of **massage cream** on perfectly clean skin. Work between your already clean hands to warm up the **massage cream** and apply to the body in circular motion. Perfect for massages, varicose veins, stretch marks, unsightly legs and anticellulite treatments.


INCI:

Aqua, Aloe Barbadensis (Aloe Vera) Leaf Juice, Caprylic/Capric Triglyceride, Coco-Caprylate/Caprates, Glyceryl Stearate SE, Propanediol, Stearic Acid, Cetyl Alcohol, Pentaerythritol, Butyrospermum Parkii (Shea Butter), Caffeine, Myristyl Myristate, Allantoin, Panthenol, Tocopheryl Acetate, Horse Chestnut (Aesculus Hippocastanum) Extract, Camellia Oleifera (Camellia) Seed Oil, Cupressus Sempervirens (Cypress) Oil, Lavandula Angustifolia (Lavender) Oil, Pelargonium Graveolens (Geranium) Oil, Rosmarinus Officinalis (Rosemary) Leaf Oil, Aniba Rosaeodora (Rosewood) Wood Oil, Phenoxyethanol, Tetrasodium Iminodisuccinate, Sodium Hydroxide.

KEY INGREDIENTS



CONCENTRATE TREATMENTS

A close-up photograph of a woman's face, her eyes closed in a state of relaxation. She has two translucent, oval-shaped patches applied under her eyes. Two hands with light purple manicured nails are gently cupping her face from the sides. The background is softly blurred, showing green foliage and a white towel.

Some skin-conditions are best addressed using a specific combination of active ingredients. Each of our products are customized to best address each different skin condition.

Essential triple action eye cream

For all skin types. Featuring aloe vera, caffeine, peptide ingredient complex, alaria esculenta extract, low and high molecular weight hyaluronic acids, horse chestnut extract, shea butter, camellia seed oil and rosehip seed oil providing the eye contour with lifting, toning and draining effects for anti-wrinkle, anti-puffiness and anti-dark circle results.

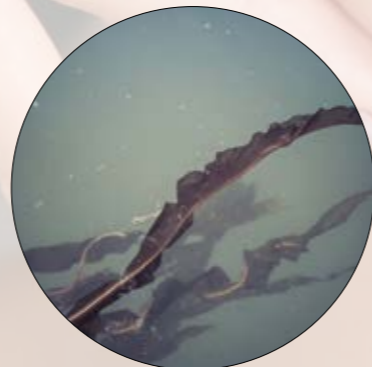
USE:

Apply a pea size amount of **eye cream** on perfectly clean skin. Work with the tips of your already clean fingers and apply to eye contour even eye lids in soft massaging and patting motion without stretching. Let it absorb for a minute before applying anything else.

INCI:

Aqua, Aloe Barbadensis (Aloe Vera) Leaf Juice, Glyceryl Stearate SE, Propanediol, Stearic Acid, Coco-Caprylate/Caprate, Biosaccharide Gum-4, Butyrospermum Parkii (Shea Butter), Caffeine, Cetyl Alcohol, Alaria Esculenta Extract, Acetyl Tetrapeptide-5, Acetyl Hexapeptide-8, Pentapeptide-18, Hydrolyzed Sodium Hyaluronate, Sodium Hyaluronate, Panthenol, Tocopheryl Acetate, Aesculus Hippocastanum (Horse Chestnut) Extract, Camellia Oleifera (Camellia) Seed Oil, Rosa Canina (Rosehip) Seed Oil, Glycerin, Caprylic/Capric Triglyceride, Phenoxyethanol, Tetrasodium Iminodisuccinate, Sodium Hydroxyde.

KEY INGREDIENTS



Anti-ageing lift serum

For all skin types. Featuring aloe vera, peptide ingredient complex, alaria esculenta extract, horse chestnut extract, low and high molecular weight hyaluronic acids, ginseng extract, olive leaf extract providing stimulation of elastin, collagen and cellular regeneration to prevent ageing while increasing the density of the epidermis.

USE:

Apply a small size amount of **serum** on perfectly clean skin. Work between your already clean hands and apply to face in circular motion and to the neck in upward motion. Follow with **cream**.

INCI:

Aqua, Aloe Barbadensis (Aloe Vera) Leaf Juice, Propanediol, Glycerin, Alaria Esculenta Extract, Allantoin, Panthenol, Manganese Gluconate, Sodium Hyaluronate, Hydrolyzed Lupine Protein Octenylsuccinate, Palmitoyl Dipeptide-5 Diaminobutyroyl Hydroxythreonine, Palmitoyl Tripeptide-5, Tetradecyl Aminobutyrolylvalylaminobutyric Urea Trifluoroacetate, Ginseng (Panax Ginseng) Extract, Horse Chestnut (Aesculus Hippocastanum) Extract, Olive (Olea Europaea) Leaf Extract, Caprylic/Capric Triglyceride, Polyglyceryl-6 Caprylate, Polyglyceryl-3 Cocoate, Polyglyceryl-4 Caprate, Polyglyceryl-6 Ricinoleate, Carbomer, Phenoxyethanol, Tetrasodium Iminodisuccinate, Sodium Hydroxide.

KEY INGREDIENTS



Anti-acne moisture mattifying cream

For combination, oily and acne-prone skin. Featuring aloe vera, zinc PCA, sea water, allantoin, panthenol, beta-glucan, lecithin, hyaluronic acid and lavender essential oil providing purifying, anti-inflammatory and soothing actions for effective regulation of oily secretions, leaving a clean matte finish.

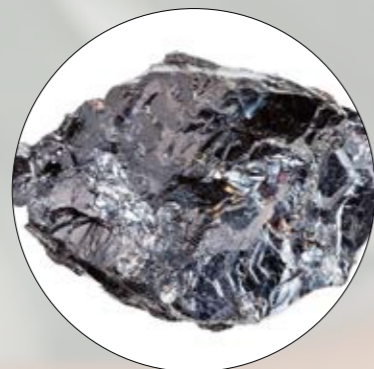
USE:

Apply a small size amount of **cream** on perfectly clean skin. Work between your already clean hands and apply to face in circular motion and to the neck in upward motion.

INCI:

Aqua, Aloe Barbadensis (Aloe Vera) Leaf Juice, Glyceryl Stearate SE, Stearic Acid, Cetyl Alcohol, Propanediol, Glycerin, Biosaccharide Gum-4, Zinc PCA, Sea Water, Allantoin, Panthenol, Sodium Carboxymethyl Beta-Glucan, Tocopheryl Acetate, Sodium Hyaluronate, Lecithin, Caprylic/Capric Triglyceride, Lavandula Angustifolia (Lavender) Oil, Pullulan, Sclerotium Gum, Xanthan Gum, Phenoxyethanol, Tetrasodium Iminodisuccinate, Sodium Hydroxyde.

KEY INGREDIENTS



Restorative serum

For all skin types. Featuring aloe vera, allantoin, panthenol, beta-glucan, manganese gluconate, low and high molecular weight hyaluronic acids with rosewood and cypress essential oils providing improvement of skin surface by activating cell renewal, reducing blotchiness, stretch marks and the harmful effects of the sun.

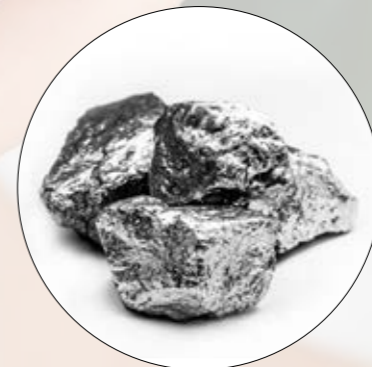
USE:

Apply a small size amount of **serum** on perfectly clean skin. Work between your already clean hands and apply to face in circular motion and to the neck in upward motion. Follow with **cream**. Perfect for improving skin surface and anti-wrinkle as well.

INCI:

Aqua, Aloe Barbadensis (Aloe Vera) Leaf Juice, Glycerin, Allantoin, Panthenol, Sodium Carboxymethyl Beta-Glucan, Manganese Gluconate, Tocopheryl Acetate, Hydrolyzed Sodium Hyaluronate, Sodium Hyaluronate, Aniba Rosaeodora (Rosewood) Wood Oil, Cupressus Sempervirens (Cypress) Oil, Polyglyceryl-6 Caprylate, Polyglyceryl-3 Cocoate, Polyglyceryl-4 Caprate, Polyglyceryl-6 Ricinoleate, Carbomer, Phenoxyethanol, Tetrasodium Iminodisuccinate, Sodium Hydroxyde.

KEY INGREDIENTS



Breast lift serum

For all women. Featuring aloe vera, ornithine, anemarrhena asphodeloides root extract, acetyl-hexapeptide 38, rosewood essential oil providing toning and tightening properties, helping breasts and décolleté regain firmness and contour while improving elasticity.

USE:

Apply a small size amount of **serum** on perfectly clean skin. Work between your already clean hands and apply to breast and décolleté in circular motion and to the neck in upward motion. Perfect for preventive and corrective treatments with anti-aging factor.

INCI:

Aqua, Aloe Barbadensis (Aloe Vera) Leaf Juice, Acetyl Hexapeptide-38, Glycerin, Anemarrhena Asphodeloides Root Extract, Ornithine, Sodium Hyaluronate, Aesculus Hippocastanum (Horse Chestnut) Extract, Ginseng (Panax Ginseng) Extract, Aniba Rosaeodora (Rosewood) Wood Oil, Tocopheryl Acetate, Polyglyceryl-6 Caprylate, Polyglyceryl-3 Cocoate, Polyglyceryl-4 Caprate, Polyglyceryl-6 Ricinoleate, Glycolipids, Phospholipids, Acrylates/C10-30 Alkyl Acrylate Crosspolymer, Hydrogenated Polyisobutene, Tetrasodium Iminodisuccinate, Phenoxyethanol, Sodium Hydroxyde.

KEY INGREDIENTS



Sculpturing body serum

For all skin types. Featuring aloe vera, caffeine, horse chestnut extract, panthenol, ginseng extract with cypress, geranium, rosewood and rosemary essential oils providing sculpturing of the body, reducing cellulite, draining excess water while firming the skin.

USE:

Apply a good amount of **body serum** on perfectly clean skin. Work between your already clean hands to warm up the **body serum** and apply to the body in circular motion. Perfect for firming, tonifying and shaping.

INCI:

Aqua, Aloe Barbadensis (Aloe Vera) Leaf Juice, Propanediol, Caffeine, Glycerin, Panthenol, Aesculus Hippocastanum (Horse Chestnut) Extract, Cupressus Sempervirens (Cypress) Oil, Pelargonium Graveolens (Geranium) Oil, Aniba Rosaeodora (Rosewood) Wood Oil, Ginseng (Panax Ginseng) Extract, Rosmarinus Officinalis (Rosemary) Leaf Oil, Polyglyceryl-6 Caprylate, Polyglyceryl-3 Cocoate, Polyglyceryl-4 Caprate, Polyglyceryl-6 Ricinoleate, Carbomer, Phenoxyethanol, Tetrasodium Iminodisuccinate, Sodium Hydroxyde.

KEY INGREDIENTS



Hydra soothing body serum

For all skin types. Featuring aloe vera, horse chestnut extract, allantoin, panthenol, with peppermint and geranium essential oils providing soothing while preventing dehydration, moisturizing and anti-ageing body gel leaving a youthful body glow.

INCI:

Aqua, Aloe Barbadensis (Aloe Vera) Leaf Juice, Propanediol, Aesculus Hippocastanum (Horse Chestnut) Extract, Glycerin, Allantoin, Panthenol, Tocopheryl Acetate, Mentha Piperita (Peppermint) Leaf Oil, Pelargonium Graveolens (Geranium) Oil, Polyglyceryl-6 Caprylate, Polyglyceryl-3 Cocoate, Polyglyceryl-4 Caprate, Polyglyceryl-6 Ricinoleate, Carbomer, Phenoxyethanol, Tetrasodium Iminodisuccinate, Sodium Hydroxyde.

USE:

Apply a good amount of **body serum** on perfectly clean skin. Work between your already clean hands to warm up the **body serum** and apply to the body in circular motion. Perfect for after sun care and maintaining a youthful body glow.

KEY INGREDIENTS



SPECIFIC TREATMENTS

Using only the best functional ingredients available, our body and massage treatment products are tailormade to meet your high demands and expectations.



Sculpturing body treatment

For all skin types. Featuring alaria esculenta extract, horse chestnut extract, chlorophyllin-copper complex, allantoin with cypress, rosemary and geranium essential oils providing detoxification, remineralisation, stimulating microcirculation while promoting cellulite reduction, perfect for in cabin treatments.

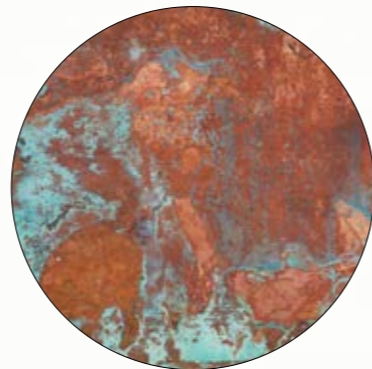
USE:

Use a good amount of **gel treatment**, work between your already clean hands and apply to body. Apply a thick layer into your body skin and leave on for 20 minutes. Rinse with lukewarm water and pat dry. Follow with **serum** and **cream**. Perfect for cellulite, stretch marks and heavy legs.

INCI:

Aqua, Propanediol, Glycerin, Allantoin, Crithmum Maritimum Callus Culture Filtrate, Alaria Esculenta Extract, Cupressus Sempervirens (Cypress) Oil, Rosmarinus Officinalis (Rosemary) Leaf Oil, Aesculus Hippocastanum (Horse Chestnut) Extract, Pelargonium Graveolens (Geranium) Oil, Chlorophyllin-Copper Complex, Caprylic/Capric Triglyceride, Polyglyceryl-6 Caprylate, Polyglyceryl-3 Cocoate, Polyglyceryl-4 Caprate, Polyglyceryl-6 Ricinoleate, Caprylic/Capric Triglyceride, Carbomer, Phenoxyethanol, Tetrasodium Iminodisuccinate, Sodium Hydroxyde.

KEY INGREDIENTS



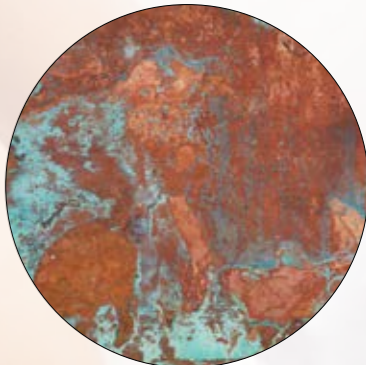
Nutrient rich aromatic treatment

For all skin types. Featuring aloe vera, allantoin, panthenol, manganese gluconate, horse chestnut extract, chlorophyllin-copper complex, retinyl palmitate, camellia seed oil, rosehip seed oil with cypress and lavender essential oils providing soothing and hydration to deep layers of the skin, stimulating cell proliferation, nourishing, toning and stabilizing skin pH, perfect for in cabin treatments.

USE:
Use a good amount of **gel treatment**, work between your already clean hands and apply to body. Apply a thick layer into your body skin and leave on for 20 minutes. Rinse with lukewarm water and pat dry. Follow with **serum** and **cream**. Perfect for hydrating and cell regeneration.

INCI:
Aqua, Aloe Barbadensis (Aloe Vera) Leaf Juice, Propanediol, Glycerin, Allantoin, Panthenol, Retinyl Palmitate, Tocopheryl Acetate, Manganese Gluconate, Cupressus Sempervirens (Cypress) Oil, Lavandula Angustifolia (Lavender) Oil, Camellia Oleifera (Camellia) Seed Oil, Rosa Canina (Rosehip) Seed Oil, Aesculus Hippocastanum (Horse Chestnut) Extract, Chlorophyllin-Copper Complex, Polyglyceryl-6 Caprylate, Polyglyceryl-3 Cocoate, Polyglyceryl-4 Caprate, Polyglyceryl-6 Ricinoleate, Carbomer, Phenoxyethanol, Tetrasodium Iminodisuccinate, Sodium Hydroxyde.

KEY INGREDIENTS



Thermal mud treatment

For all skin types. Featuring aloe vera, black silt, Manicouagan clay, shea butter with lavender and rosewood essential oils providing stimulation of blood circulation, reduce cellulite, eliminate toxins, soothe and revitalize the skin, bringing muscular relaxation and general well-being.

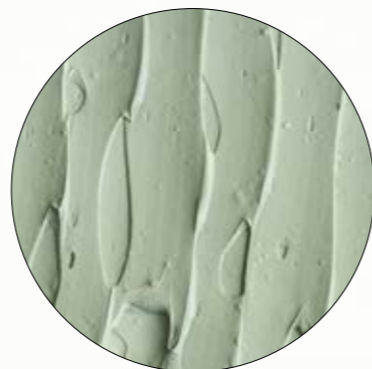
USE:

Use a good amount of **creamy treatment**, work between your already clean hands and apply to body. Apply a thick layer into your body skin and leave on for 20 minutes. Rinse with lukewarm water and pat dry. Follow with **serum** and **cream**. Perfect for purifying, remineralizing, detoxifying and revitalizing.

INCI:

Aqua, Silt, Aloe Barbadensis (Aloe Vera) Leaf Juice, Butyrospermum Parkii (Shea Butter), Cetyl Alcohol, Glycerin, Glyceryl Stearate SE, Stearic Acid, Manicouagan Clay, Aniba Rosaeodora (Rosewood) Wood Oil, Lavandula Angustifolia (Lavender) Oil, Phenoxyethanol, Tetrasodium Iminodisuccinate, Sodium Hydroxyde.

KEY INGREDIENTS



Skincare and massage dry oil

For all skin types. Featuring squalane, camellia seed oil, rosehip seed oil, grape seed oil with rosewood and geranium essential oils providing toning and firming properties, perfect for massages producing a state of total rest and well-being.

USE:

Apply a good amount of **dry oil** on perfectly clean skin. Work between your already clean hands to warm up the **dry oil** and apply to the body in circular motion. Perfect for massage and toning and firming the skin.

INCI:

Caprylic/Capric Triglyceride, Squalane, Camellia Oleifera (Camellia) Seed Oil, Rosa Canina (Rosehip) Seed Oil, Aniba Rosaeodora (Rosewood) Wood Oil, Pelargonium Graveolens (Geranium) Oil, Vitis Vinifera (Grape) Seed Oil, Tocopheryl Acetate.

KEY INGREDIENTS



Skincare and massage oil

For all skin types. Featuring camellia seed oil, rosehip seed oil with cypress, geranium, rosemary, lemongrass, lavender and peppermint essential oils providing detoxifying, draining and smoothing actions while boosting microcirculation, perfect for draining and slimming massages.

USE:

Apply a good amount of **oil** on perfectly clean skin. Work between your already clean hands to warm up the **oil** and apply to the body in circular motion. Perfect for massage and for draining and smoothing the skin.

INCI:

Caprylic/Capric Triglyceride, Cupressus Sempervirens (Cypress) Oil, Pelargonium Graveolens (Geranium) Oil, Rosa Canina (Rosehip) Seed Oil, Camellia Oleifera (Camellia) Seed Oil, Rosmarinus Officinalis (Rosemary) Leaf Oil, Tocopheryl Acetate, Cymbopogon Flexuosus (Lemongrass) Oil, Lavandula Angustifolia (Lavender) Oil, Mentha Piperita (Peppermint) Leaf Oil.

KEY INGREDIENTS



CONTACT US TO GET STARTED
CREATING YOUR OWN PRIVATE LABEL

info@aquabiotech.no

abt

AQUA BIO TECHNOLOGY ASA

www.aquabiotechnology.com